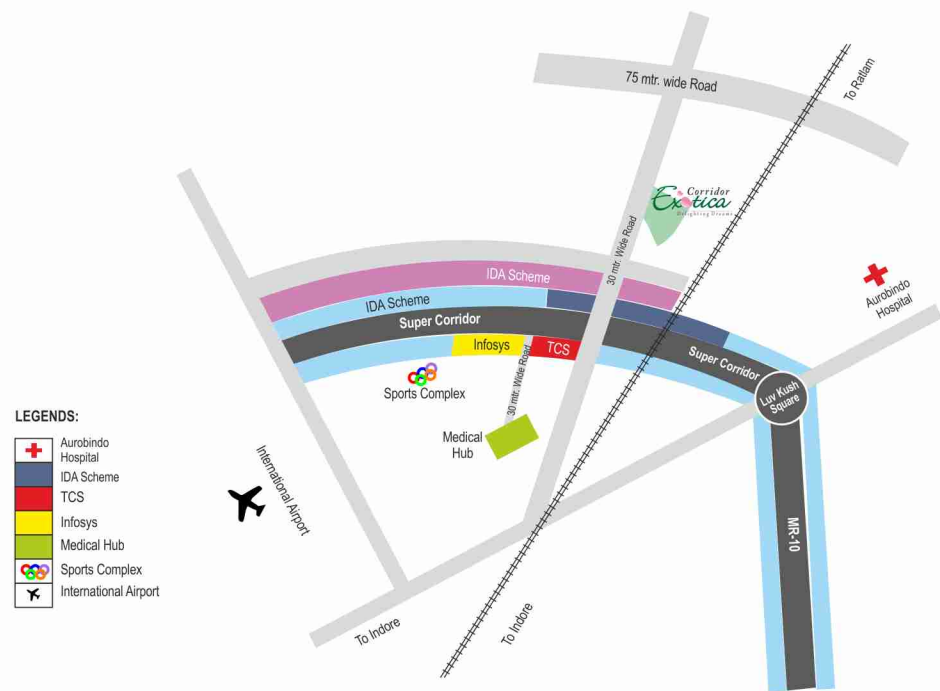


## Location Map



Promoters:



### Premshree Prime Properties Pvt. Ltd.

Metro tower P-211, 212 IInd floor, Schm No. 54, Vijay Nagar,  
Near Satya Sai School, A.B. Road, Indore.  
Ph.: 0731-4274270, 8959 316666, 8959 326666  
Website : www.premshree.com

Architects:

**Neha Jain**  
*arch space design*  
1st floor, Geetanjali Complex,  
2863/3719 lewis road, Bhubaneswar.  
Ph.: 0674-2435260, 2430344  
Email: arcspace23@gmail.com

Legal Advisors:

**Jain Associates**  
F-16, BCM City, Navlakha Square,  
A.B. Road, Indore.

ANIL ADVT. & MKTG. ASSO. #0731-4037492

*Establishing Imaginations  
Architecting Indulgence*



The vista of  
Charming Vibes





## Enlighten your life with the aroma of luxuries

Sketched in a sprawling 13 acres of the heart of new Indore, every inch of Corridor Exotica has been ignited with the fragrance of ravishing luxuries and comforts. The grandiloquent architecture and majestic masonry of this sparkling domain is a serene stimulant. Moreover, its proximity to the peers of prosperity, radiates a gloriolate which is truly exotic.





## Succumb to the Succulence of Nature

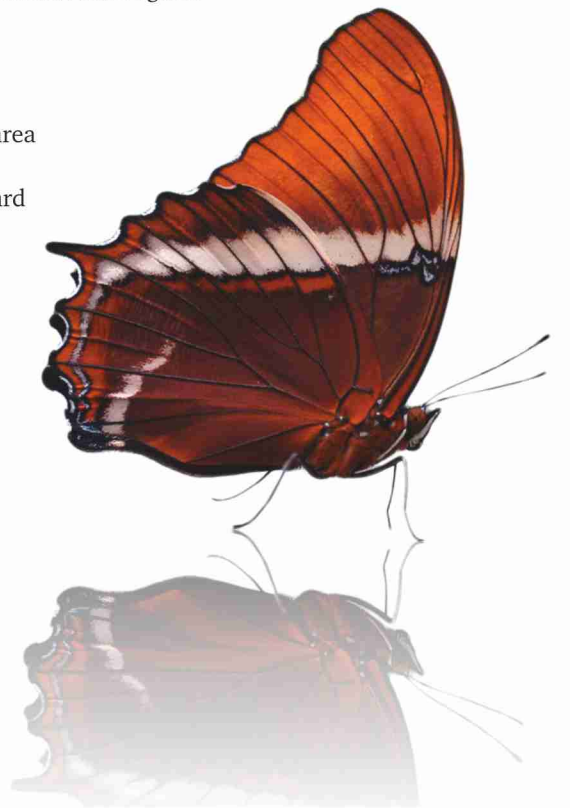
We have been very ruminative to keep the lavish land of Corridor Exotica satiated with nature. Thus, we have planned the project with 70 percent open space so that you are never deprived of the beauty of nature. Moreover, every flat has been kept open from 3 sides, to let you enjoy the sweet nothings of life in your own privacy. Furthermore, the lush green gardens and heavy plantation will also soothe your senses.



## Get animated with awakening wings

The tantalizing club house with a swimming pool, a kid splash, a well equipped gymnasium and a cafe will awake you to a life full of animation. These facilities will give you a flight above all the stress and will tranquilize your tensions. The active and invigorating aura of the club house will vitalize your stagnant senses once again.

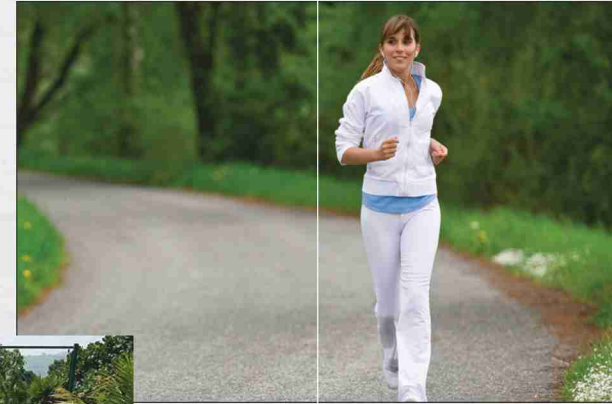
- Kid's splash
- Swimming pool
- Meditation & yoga area
- Table tennis
- Carrom & Chess board
- Badminton court
- Pool table



Spa



Jogging Track



Gym



Amphitheatre



Landscaped Garden



Café/Coffee Shop

## Take delight in the toppings of life

Corridor Exotica is also decked with several world class facilities and amenities. We have provided an assuasive Spa for your solace, a jogging track for your health and a café for your chatty moments, so that you never miss the good things of life.

### Other Amenities :

- Guest house with pantry
- To and fro transport for senior citizens
- Adventure walls
- Wi-Fi zones
- Steam, Sauna, Jacuzzi
- Temple

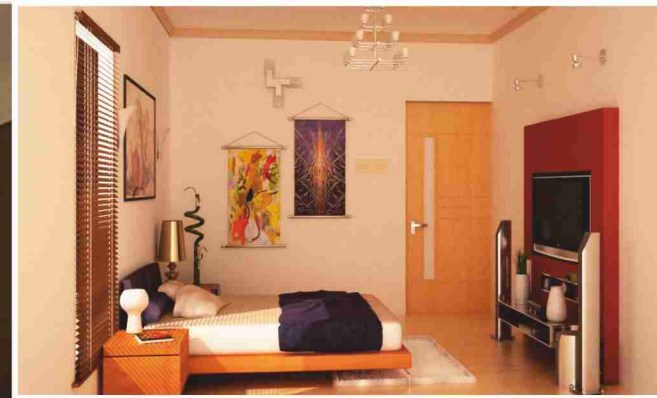




## Spoil your soul with the savory Interiors

At corridor exotica life is all about comforts and class. The rich interiors and cozy ambience of our flats embellish your life with ease and élan. The snuggish settings and the stylish décor are sure to make you spellbound and spoil your senses.





## Take delight with the Intoxicating Designs

Besides the soothing interior amenities, Corridor Exotica provides uniquely designed spacious settings in every bedroom. All the rooms of our flats have been designed to give you the room to unwind and fly in high spirits.







## Coaxing Construction Quality

### Doors:

External:  
Polished/Painted frames made of hardwood-teak veneered & polished shutter/ moulded skin door.  
Internal:  
Painted flush shutters/moulded skin doors.

### Windows:

Power coated aluminum 3 track window with mosquito net.

### Kitchen:

Marble/Granite platform up to 2 ft ceramic tiles, oil bound distemper, stainless steel double bowl single drain board sink.

### Toilet:

Marble/Granite platform anti skid ceramic tiles, CP fittings of Jaquar or similar make.

### Electric Fittings:

Modular switches with concealed copper wiring, TV, telephone, and AC points provided in drawing room and all bedrooms.

### Flooring:

Vitrified tiles in living, dining, bedrooms and lobby area within the apartment, granite terrazzo stone for balcony and lift / service lobby.

### Walls:

Emulsion paint on inner walls with putty finish and weather shield paint on the outer walls of the apartment. Emulsion paint in common areas.

### Structure:

RCC framed structure for earthquake resistance.

## The Inducing Incentives

- Doctor on call
- 24 x 7 Securities
- CCTV for parking & ground floor
- Videodoor phone with restricted entry in lobby
- Exclusive entrance lobby for each building
- 24 x 7 power back up for common areas.
- Rain water harvesting
- Sewage treatment plant (STP)
- Provision for inverter connection
- Ready broadband and dish TV facility (optional)
- On call- team of electricians, plumbers and housekeeping service
- Games zone with X Box – (kinect) and PS3
- Servant's verification and registration card system.
- Firefighters

Power Backup



Security Guards



CCTV Surveillance



Big Lobbies



Doctor on call



Rain Water Harvesting