

Ongoing Projects



Welcome to the city of joy

Siddhanta Niketan
Homes of Joy

Sanwer Road, Near Super Corridor, Indore. www.vastudevelopers.com

For details and bookings please call : 8959010000, 9713894115

Promoters



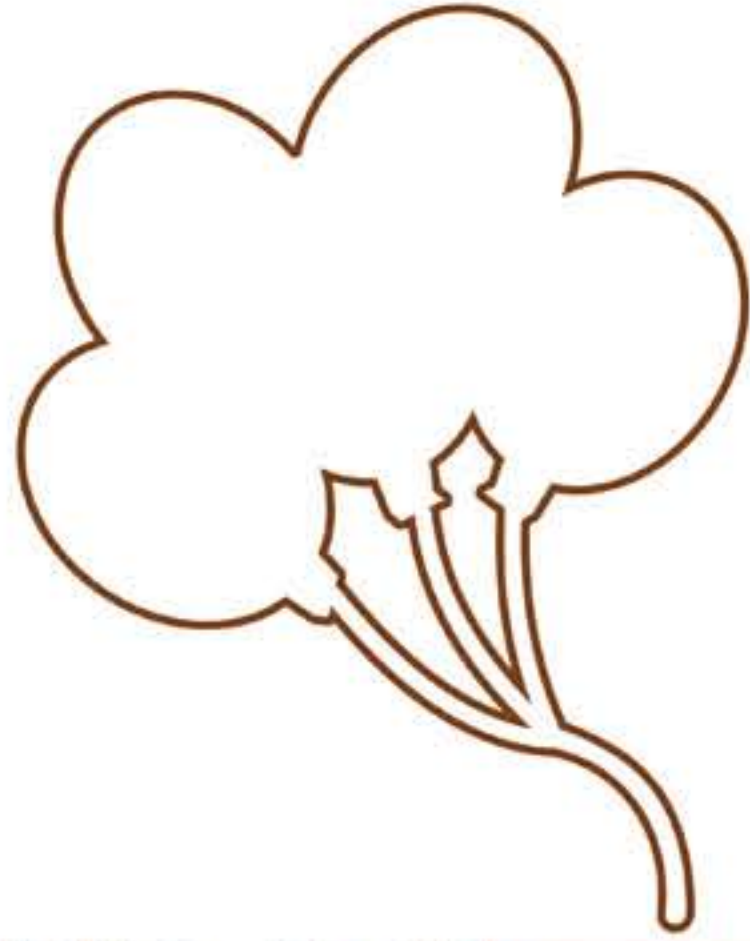
Builders & Developers



475, Jawahar Marg, Indore, Ph.: 0731-4208365

* This brochure is conceptual presentation & not a legal document. All drawings, specifications and images in this brochure are tentative and builder reserves the right to change, modify or discard any or all these without any notice.
• T&CP No.: 76115/2311/2011 Dated 17.10.2011 • Site plan No.: 43/A/2/1/32 Dated 05.02.2012 • Development No.: 08 Dated 14.03.2012 • Building Permission No.: 33 Dated 05.04.2012





Siddhanta Niketan
Homes of Joy

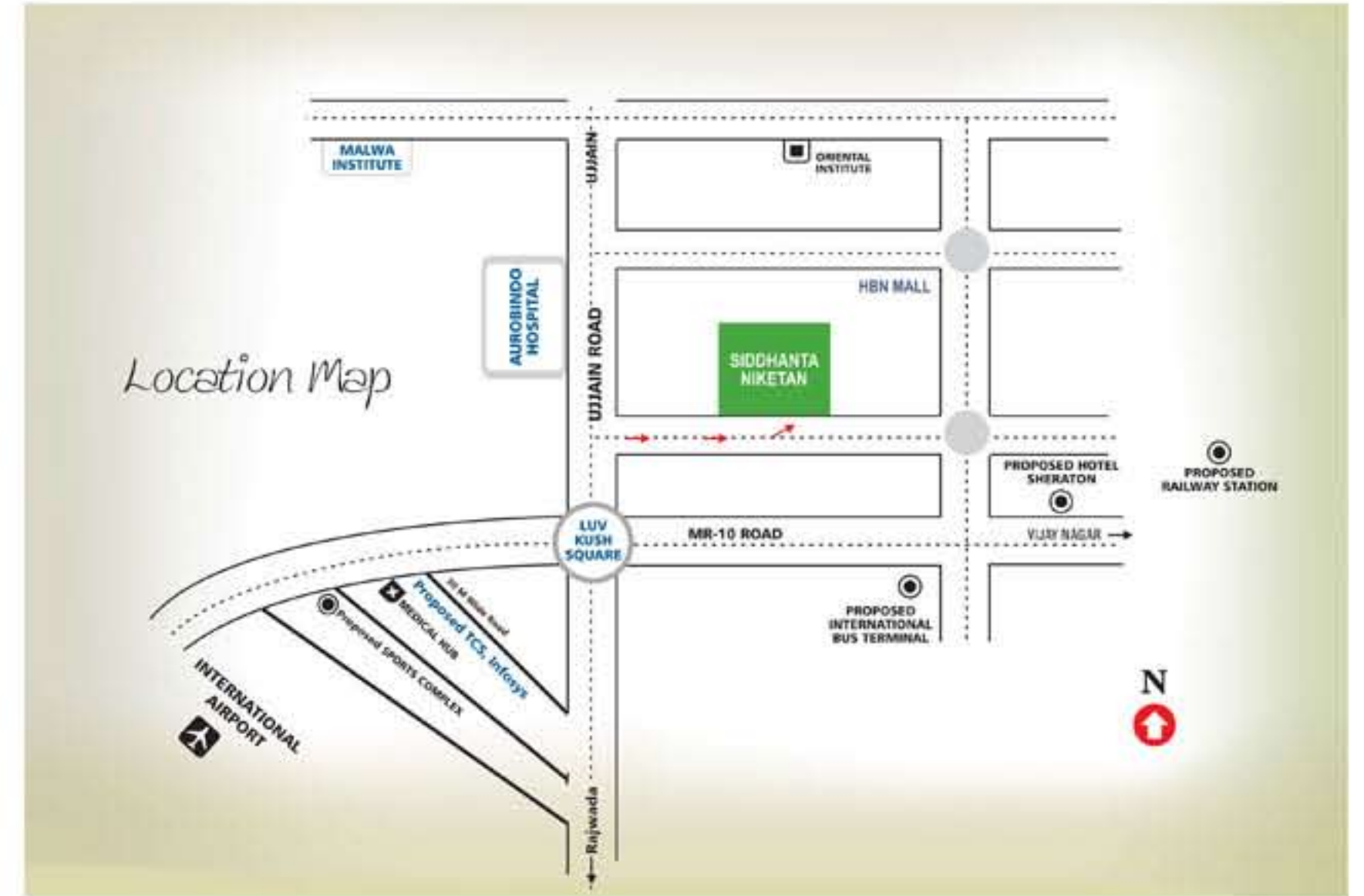
It's very true to say that if your home makes you happy, your happiness spreads all around. Thus, Vastu Developers brings to you its newest project **Siddhanta Niketan** - homes of joy. Located near the Super Corridor and surrounded by greenery, this fully-integrated township offers spacious affordable apartments. So choose your fully-facilitated home of happiness in the lap of nature & at the place where future of Indore lies.





Most Desired Location

Siddhanta Niketan is situated at one of the most prime locations of Indore, near the Super Corridor that links you to the future of this city. Enveloped by nature, the township is close to every necessity that provides you a convenient life.



Conveniences that make life privileged

- Adjacent to HBN Shopping Mall
- Opposite Aurobindo Hospital
- 1 minute from Super Corridor
- 2 minutes from Educational Institutes like Oriental, Malwa, LNCT and Vaishnav
- 5 minutes from proposed TCS & Infosys campus
- 5 minutes from the proposed Railway Station, International Bus Terminal & 5 Star Hotel
- 7 minutes from International Airport
- 7 Minutes from proposed DAVV University
- 10 minutes from Vijay Nagar



Siddhanta Niketan
Homes of Joy

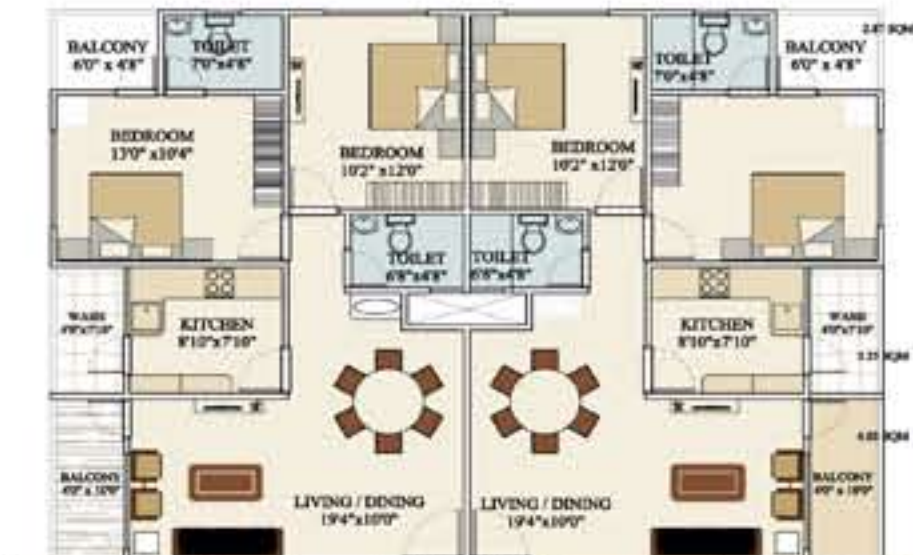
The look of a happy life



*Life fully
amenitized*

Just a few other reasons
that add to your joy of living here..

- Club House
- Fully-Equipped Gym
- Swimming Pool
- Jacuzzi
- Steam & Sauna
- Party Hall
- Fully-Furnished
A.C. Guest Rooms
- Pool Table
- Table Tennis
- Sandpit
- Kids Park
- Carrom Board



2 BHK (2 Flats)
Built-up Area
1113 Sq. ft.



1 BHK (2 Flats)
Built-up Area
662 Sq. ft.



3 BHK (2 Flats)
Built-up Area
1386 Sq. ft.

Typical Floor Plan



Specifications

- | | | |
|-------------------------------------|---|--|
| Structure : | Earthquake resistant structure | flush door with superior quality hardware fitting |
| Flooring : | All flooring - 2'X2' Vitrified tiles Balconies - Anti-skid ceramic tiles | Windows : Powder coated Aluminium windows |
| Toilets - Wall tiles - Glazed tiles | Flooring - Anti-skid ceramic tiles | Plumbing : ISI mark Plumbing |
| Paint : | Interior - ISI mark plastic paint like Asian, Nerolac etc. Exterior - ISI mark exterior paint like Asian, Nerolac etc. | C.P.Fitting : Branded C.P. fittings like Jaquar or equivalent |
| Kitchen : | Granite platform with glazed tiles dado Single bowl S.S. Sink | Electrical : Modular switches with ISI mark wire |
| Doors : | Hard wood door frame and solid core pressed skin | Lift : 2 lifts. 1 lift with power back up in each block |
| | | Security : Secured independent campus with security guard and hightened boundary wall |

