



Inspired by *you,*  
Inspired for *you,*

a township called **Satyamitra Rajlaxmi Nature**





# Inspired by your *Aspirations*

**Make a wish for your dream home, and we turn your wishes into reality**

We aspire to create the best for you. Welcome to the wonder-world of Satyamitra Rajlaxmi Nature, the only place where you will find a perfect mix of the best homes and the serenity and beauty of mother nature put together. Satyamitra Rajlaxmi Nature is a project that is marked by quality and class with each square inch. Perfectly planned and in the process of being developed, this wonder township is bound to win your hearts.

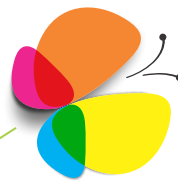


# Inspired by *Class*

**Providing dwelling options that are a cut above the rest**

Satyamitra Rajlaxmi Nature is an ambitious project that draws inspiration from the beauty and serenity of Mother Nature. A project that is marked by villas and mid-rises, Satyamitra Rajlaxmi Nature is the perfect living destination for the perfect families. Surrounded by the best of facilities and amenities, once here, it is our personal assurance that you would never want to leave.





Inspired by *Distinction*

**Our apartments promise complete sense of satisfaction**

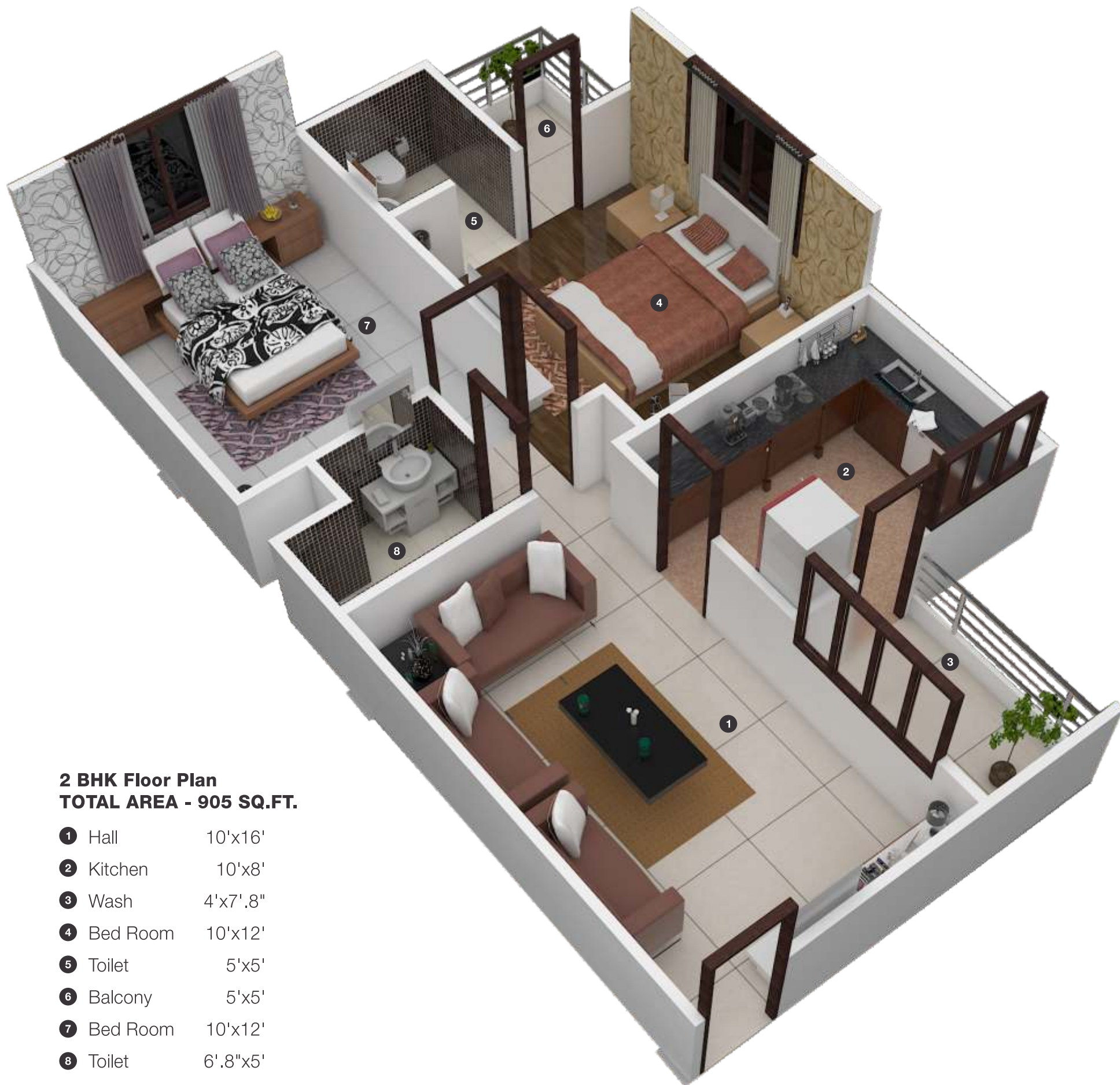
## Our Apartments

Status, aura, style, quality, excellence are a few of the words that define the mid-rise apartments at Satyamitra Rajlaxmi Nature. Inspired by class, every apartment has been carefully made with meticulous planning and architecture. Welcome your family to start living in apartments which are bound to add superior value to your life.



n





**2 BHK Floor Plan**  
**TOTAL AREA - 905 SQ.FT.**

- ① Hall            10'x16'
- ② Kitchen        10'x8'
- ③ Wash           4'x7'.8"
- ④ Bed Room     10'x12'
- ⑤ Toilet          5'x5'
- ⑥ Balcony       5'x5'
- ⑦ Bed Room     10'x12'
- ⑧ Toilet          6'.8"x5'





**3 BHK Floor Plan**  
**TOTAL AREA - 1400 SQ.FT.**

①	Drawing Room	10'x16'
②	Dining Room	10'x14'
③	Kitchen	7'x11'
④	Wash	5'x7'
⑤	Toilet	7'x4'.8"
⑥	Bed Room	10'x12'
⑦	Toilet	5'x5'
⑧	Balcony	5'x5'
⑨	Bed Room	10'x12'
⑩	Bed Room	10'x12'
⑪	Toilet	5'x5'
⑫	Balcony	5'x5'

# Inspired by *Quality*

The best of the best, just for you



## FLOORING

- Living/ Drawing/ Dining -Vitrified
- Master Bedroom -Vitrified
- Other Bedrooms -Vitrified
- Other Common Areas -Vitrified
- Toilet Flooring & Fitting -Ceramic
- Wash Area -Ceramic
- Kitchen -Vitrified

## BATHROOMS

- Indian style WC/ choice of floor mounted Western WC in bathroom of solo make or equivalent
- White/ colour wash basins of 'solo' make or equivalent
- Ceramic tiles of 'HEM' make or equivalent
- Shower arrangement
- Bathroom fitting of 'Solo' or equivalent
- Orissa pan of 'Solo' or equivalent

## WALL TILES

- Ceramic tiles up to 6/ 7 ft. in bathrooms

## KITCHEN

- Granite top with Stainless Steel sink & 2 ft. DADO

## Apartment Specifications



### PAINT

- Interior-putty with plastic emulsion
- Exterior-water proof Asian or equivalent

### DOORS & WINDOWS

- Main door- One side Teak finish
- Modern flush doors with magic eye
- Internal doors- Flush doors with both sides painted
- Windows- Powder coated Aluminium with glass

### ELECTRICAL FITTINGS

- Electrification with MS/ PVC conduits, fire resistant Copper wires, modular Anchor switches, Telephone, TV plug points, AC points in master bedroom and drawing room

Inspired by *Excellence*

Row-houses here are a cut above the rest

## Our Row-Houses

Talk stature, structure, design, specifications or the very planning of each row, what you are sure to feel is pure excellence come alive. With every step that you take into our row-house, you will be able to feel the sheer delight of completeness. As you walk through, you will realize that your aspiration of owning your very own dream home comes face to face with reality.







**Saleable Area - 1850 sq.ft.**  
**Plot Size - 23x42 (966 sq.ft.)**  
**GROUND FLOOR PLAN**

- ① Lawn 8'x8'
- ② Verandah 4'x8'
- ③ Porch 10'x16'2"
- ④ Drawing 12'x16'
- ⑤ Dining 10'4"x8'4"
- ⑥ Kitchen 10'x7'8"
- ⑦ Toilet 7'x6'
- ⑧ Bed Room 12'x10'
- ⑧ Open Wash 10'x5'



### FIRST FLOOR PLAN

1	Lounge	10' x 9'6"
2	Bed Room	12' x 16'
3	Dress	7' x 5'8"
4	Toilet	7' x 5'
5	Bed Room	14' x 10'
6	Dress	7' x 5'
7	Toilet	7' x 5'
8	Balcony	10' x 4'
9	Open Area	3'4" x 5'

# Inspired by *Imagination*

Specifications that are just too good to be true



## **SPECIFICATION**

### FLOORING

- Living/ Drawing/ Dining -Vitrified
- Master Bedroom -Vitrified
- Other Bedrooms -Vitrified
- Other Common Areas -Vitrified
- Toilet Flooring & Fitting -Ceramic
- Kitchen -Vitrified
- Stair Case -Granite

### BATHROOM

- With solar water heater, hot and cold water
- All Bedroom: Hot and cold water with mixer
- Wall tiles: Ceramic tiles up to 6 ft-7 ft in bathroom
- Sanitary: Indian & Western (as per choice)

### KITCHEN

- Granite top with Stainless Steel sink and 2ft. DADO



## Row-house specifications



### PAINT

- Interior- Putty with plastic emulsion
- Exterior- Water proof Asian or equivalent

### TAP FITTINGS

- Jaquar or equivalent for shower and wash basin

### DOOR & WINDOWS

- Main door- Both side Teak finish flush door with magic eye
- Internal doors- Flush doors with both sides painted
- Windows- Powder coated Aluminium with glass and mosquito netting

### ELECTRICAL FITTINGS

- Electrification with MS/ PVC conduits, fire resistant Copper wires, modular Anchor switches, telephone, TV plug points, AC points in master bedroom and drawing room

# Inspired by *Pleasure*

A world within a world, giving the best of every living delight



**GRAND ENTRANCE GATE**

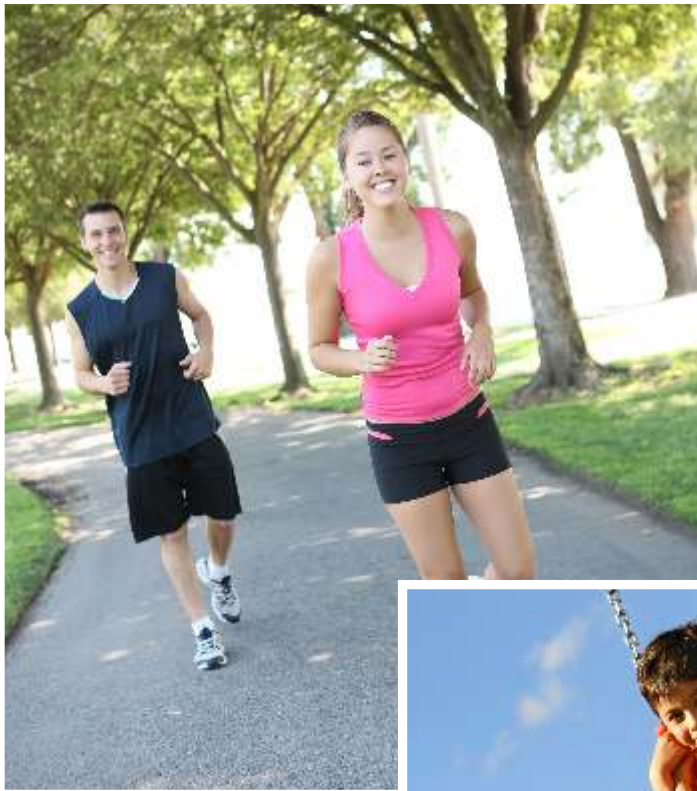
To make your stay a memorable one, Satyamitra Rajlaxmi Nature has ensured to put together every facility to make your life a one full of relaxation, contentment and satisfaction. A state-of-the-art club house loaded with the best of features, swimming pool, manicured gardens, yoga zones, jogging tracks and a tennis court are just a few of the star features that you will experience here.

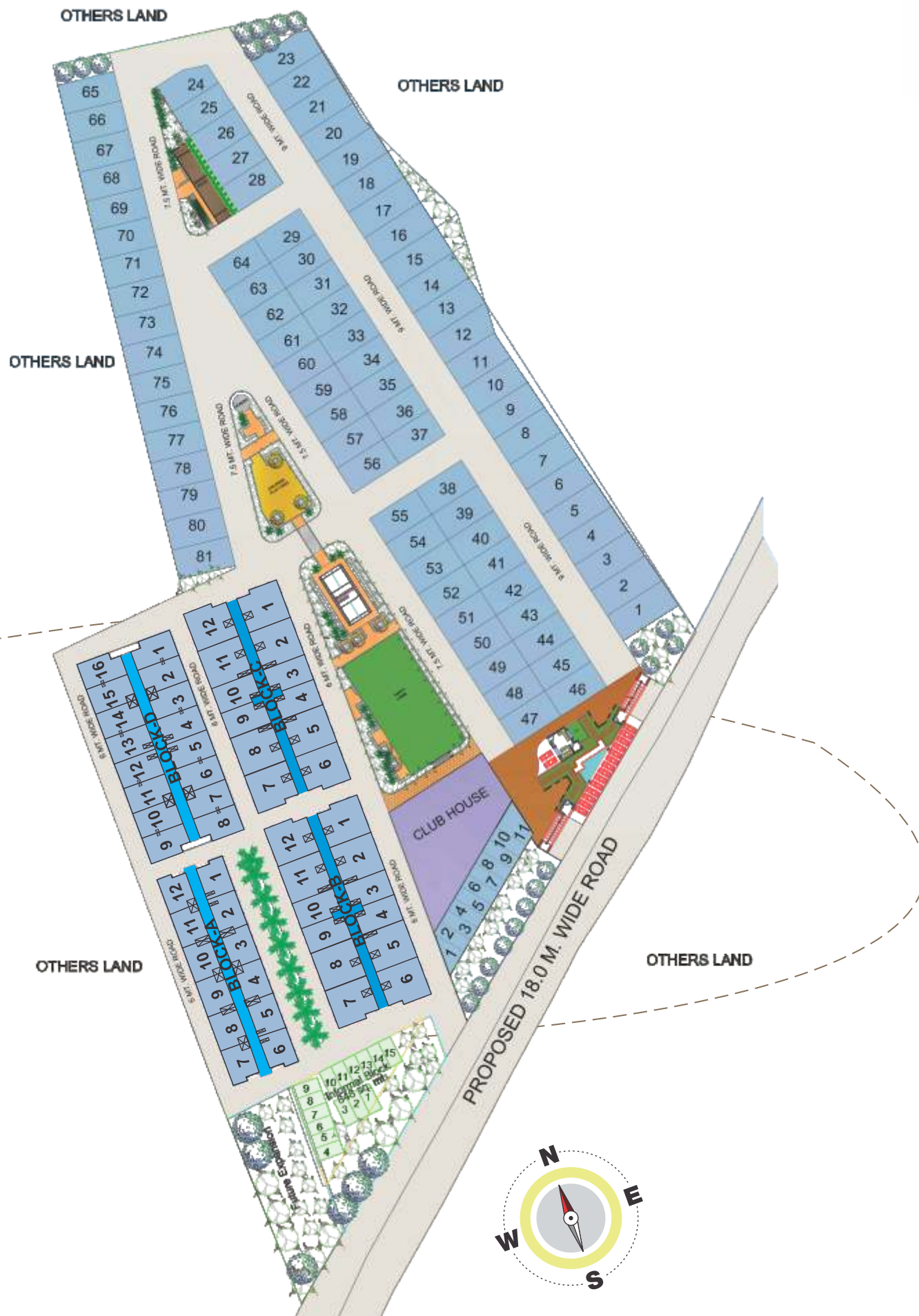
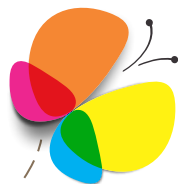


**CLUB-HOUSE FACILITY WITH  
SWIMMING POOL AND MORE**

# Inspired by *Delight*

There is more for you



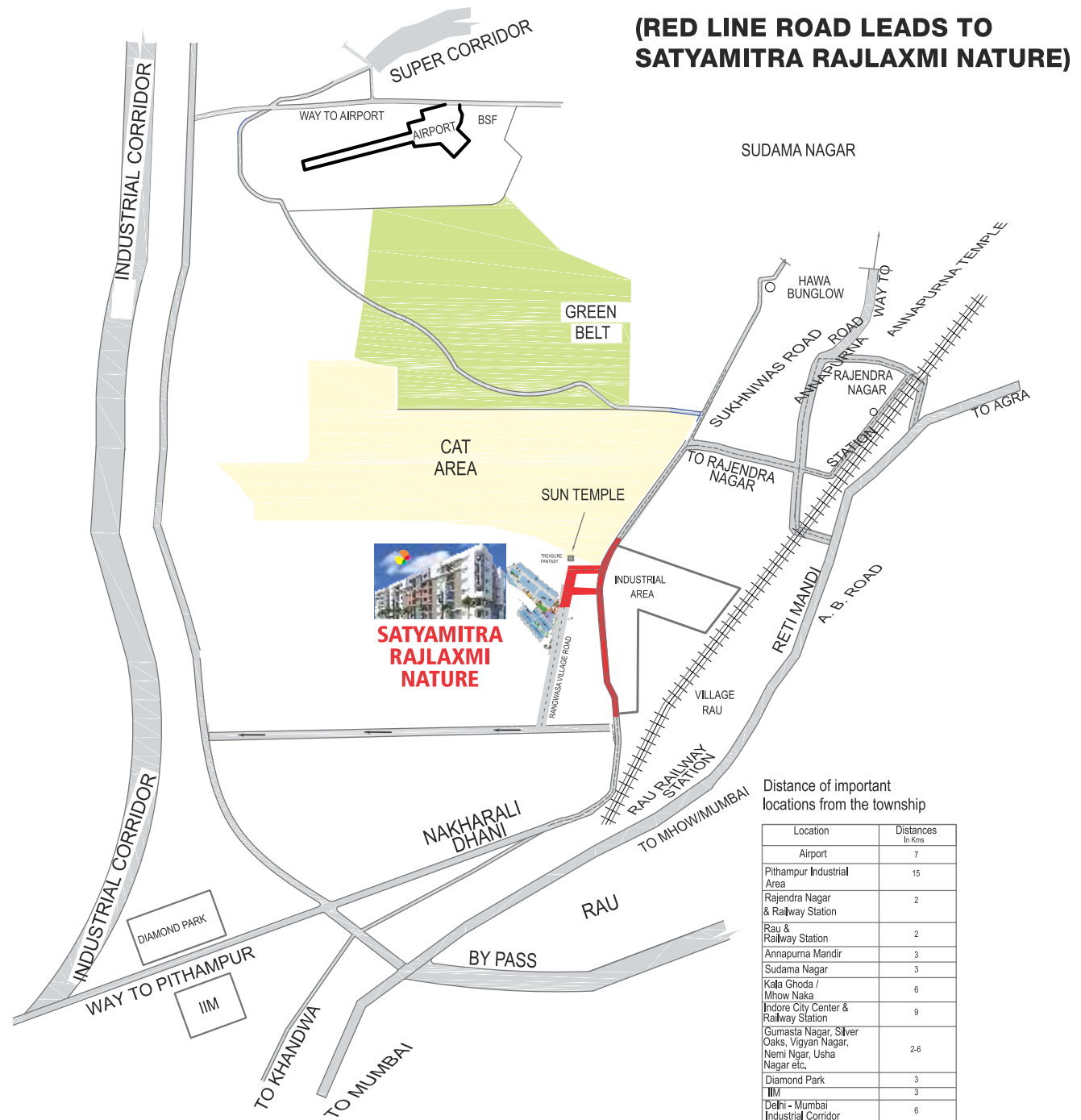


# Inspired by *Foresight*

**A location that is on its way to witness growth, a perfect investment option**

## LOCATION ADVANTAGE

Satyamitra Rajlaxmi Nature is a fully integrated township, which is situated at a location that is seen as prime in terms of living as well as investment. Our township is situated at a location, which is close to the railway station, reputed schools, markets, malls, multiplexes, hospitals and more. The location is very well connected by all modes of transportation as well. All these factors put together, make Satyamitra Rajlaxmi Nature the most sought after residential living option and you are most welcome to experience the feeling of bliss when it comes to living and life.



NOT TO SCALE



A complete life awaits you...

Satyamitra





## SATYAMITRA INFRASTRUCTURE PVT. LTD.

**SITE:** Cat Rau Road, Near Sun Temple, Indore

**CITY MARKETING OFFICE:** Rajlaxmi Developers PVT Ltd. 570 Vigyan Nagar, Annapurna Road, Indore

**Website:** www.rldpl.com,

**FOR BOOKINGS CONTACT:** +91 96696-11555, 88890-78601

Easy loan facility available from Nationalized Banks and Financial Institutions

Finance  
available from:



DISCLAIMER: This document is meant only for promotional purpose and has no legal value.  
The architects and builders reserve all rights to make amendments in terms of design and specifications without giving prior notice.