



VIVA LA VALENCIA!

Live more. Laugh more.
Love every moment more.



24 ACRES OF RELAXED SPANISH-STYLE LIVING INSPIRED BY THE CITY OF VALENCIA.

BRIGADE
Valencia
Near Electronic City, Hosur Road



Images are indicative. For representation only





Artist's Impression

BIENVENIDO BENGALURU!
WELCOME TO THE SUNNY LIFE.








The information depicted herein viz., master plans, floor plans, furniture layout, fittings, illustrations, specifications, designs, dimensions, rendered views, colours, amenities and facilities etc., are subject to change without notifications as may be required by the relevant authorities or the Developer's architect, and cannot form part of an offer or contract. Whilst every care is taken in providing this information, the Developer cannot be held liable for variations. All illustrations and pictures are artist's impressions only. The information is subject to variations, additions, deletions, substitutions and modifications as may be recommended by the company's architect and/or the relevant approving authorities. The Developer is wholly exempt from any liability on account of any claim in this regard. (1 square metre = 10.764 square feet). E & OE. All dimensions and calculations are done in metric system (M/Sq.m), and imperial system (Ft/Sq.ft) shown is for reference only. All dimensions indicated in the drawing are from unfinished surfaces, excluding plaster thickness and tile thickness.

CENTER OF LIFE

A location that brings everything to you.

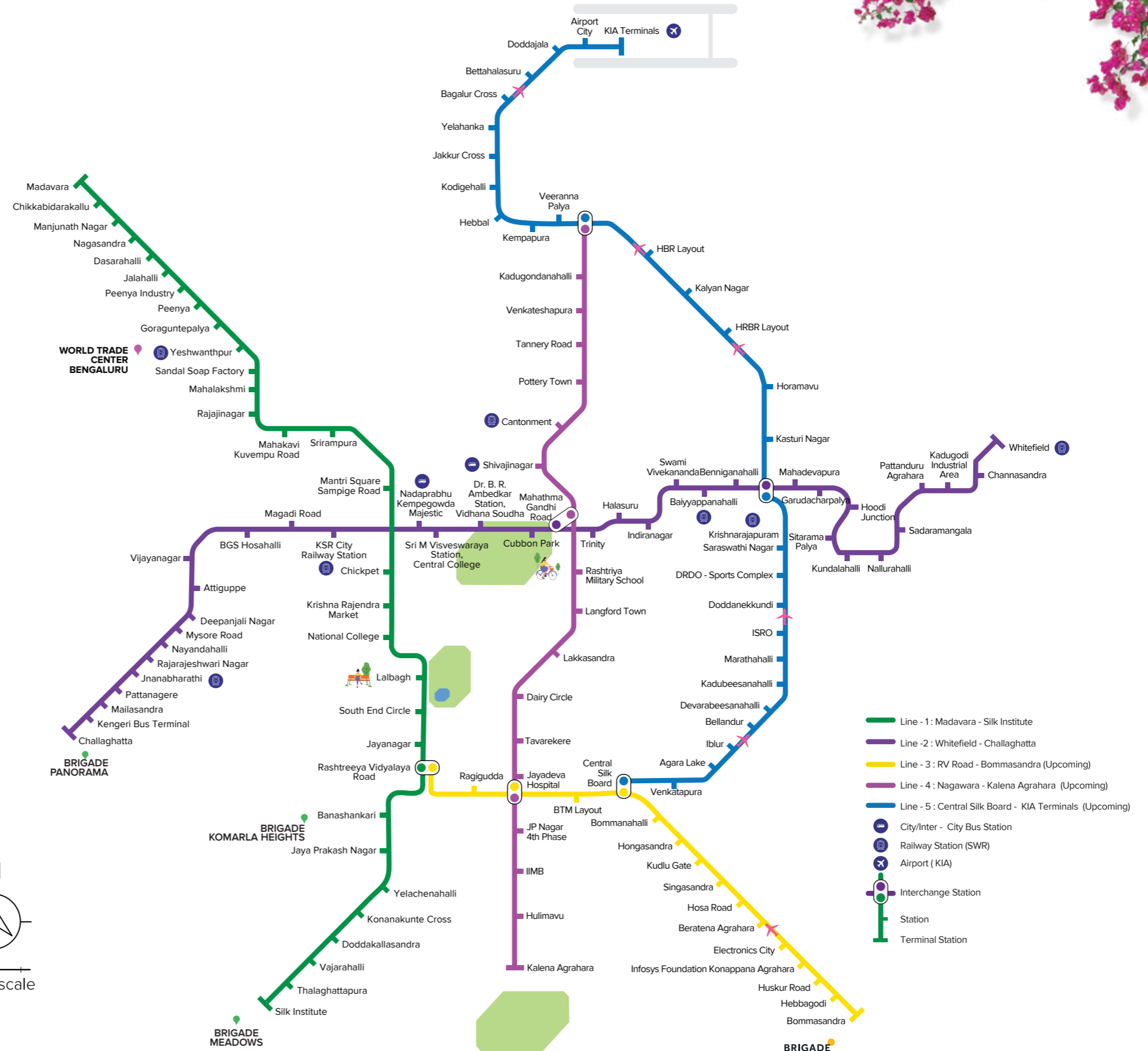
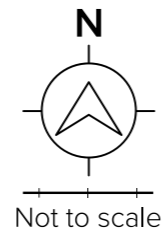


Indicative map. Not to scale.

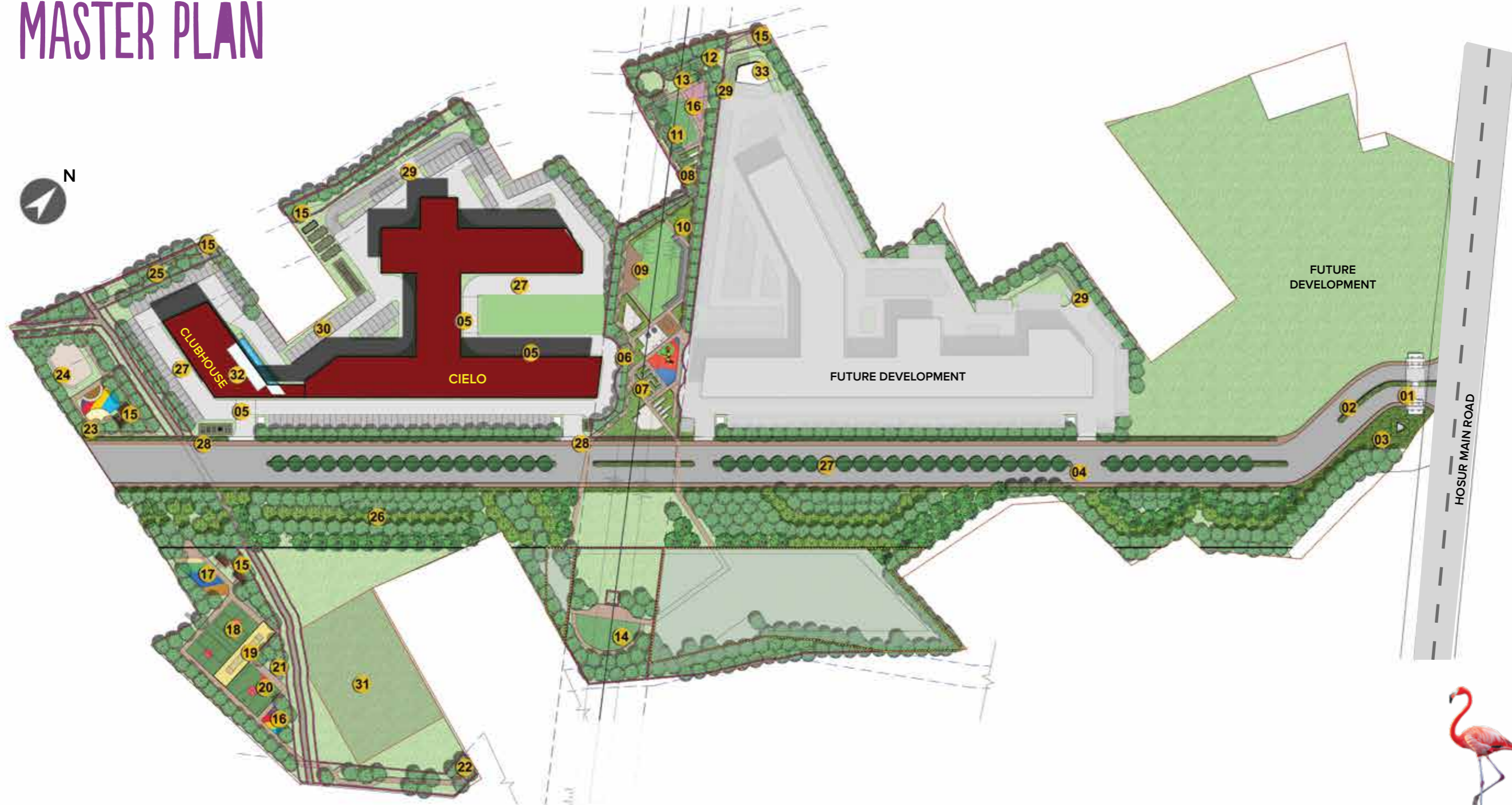
-  IT Park & Industrial Area
-  School/College
-  Office
-  Police Station
-  Market
-  Metro Station
-  Hospital



CONNECTED LIKE WOW!
 An address that is becoming the envy of the town.



MASTER PLAN



- | | | | | | |
|-------------------------------|--------------------------------|------------------------|----------------------------|-------------------------|------------------------------------|
| 1. Entry & exit | 7. Maze garden | 13. Seating pod | 19. Cricket practice pitch | 25. Aroma garden | 31. Substation |
| 2. CDP road | 8. Community garden | 14. Play field | 20. Dribble court | 26. Temporary tree park | 32. Club house with swimming pool |
| 3. Clock tower | 9. Gathering lawn | 15. Pavilions | 21. Stepped seating | 27. Driveway | 33. OWC park and open space |
| 4. Tree lined avenue | 10. Floral garden | 16. Outdoor gym | 22. Pet park | 28. Transformer yards | Park and open space |
| 5. Building drop off | 11. Yoga lawn+reflexology path | 17. Children play area | 23. Toddlers' sand pit | 29. Ramps to basement | Civic amenities |
| 6. Nature trail/Jogging track | 12. Buffer planting | 18. Multipurpose court | 24. Skating rink | 30. Car parking | ☒ Existing High tension line |



The information depicted herein viz., master plans, floor plans, furniture layout, fittings, illustrations, specifications, designs, dimensions, rendered views, colours, amenities and facilities etc., are subject to change without notifications as may be required by the relevant authorities or the Developer's architect, and cannot form part of an offer or contract. Whilst every care is taken in providing this information, the Developer cannot be held liable for variations. All illustrations and pictures are artist's impressions only. The information is subject to variations, additions, deletions, substitutions and modifications as may be recommended by the company's architect and/or the relevant approving authorities. The Developer is wholly exempt from any liability on account of any claim in this regard. (1 square metre = 10.764 square feet). E & OE. All dimensions and calculations are done in metric system (M/Sq.m), and imperial system (Ft/Sq.ft) shown is for reference only. All dimensions indicated in the drawing are from unfinished surfaces, excluding plaster thickness and tile thickness.



Artist's Impression

CLUBHOUSE AMENITIES

- Entrance Lobby/Reception
- Multipurpose Hall
- Squash Court
- Café Pantry + Outdoor Café
- Children's Play Area
- Gym
- Pantry
- Aerobics
- Table Tennis
- Billiards
- Co-working Space
- Badminton Courts
- Board Games, Foosball, Air Hockey
- Yoga
- Terrace
- Swimming Pool & Kids Pool with Deck

The information depicted herein viz., master plans, floor plans, furniture layout, fittings, illustrations, specifications, designs, dimensions, rendered views, colours, amenities and facilities etc., are subject to change without notifications as may be required by the relevant authorities or the Developer's architect, and cannot form part of an offer or contract. Whilst every care is taken in providing this information, the Developer cannot be held liable for variations. All illustrations and pictures are artist's impressions only. The information is subject to variations, additions, deletions, substitutions and modifications as may be recommended by the company's architect and/or the relevant approving authorities. The Developer is wholly exempt from any liability on account of any claim in this regard. (1 square metre = 10.764 square feet). E & OE. All dimensions and calculations are done in metric system (M/Sq.m), and imperial system (Ft/Sq.ft) shown is for reference only. All dimensions indicated in the drawing are from unfinished surfaces, excluding plaster thickness and tile thickness.



The information depicted herein viz., master plans, floor plans, furniture layout, fittings, illustrations, specifications, designs, dimensions, rendered views, colours, amenities and facilities etc., are subject to change without notifications as may be required by the relevant authorities or the Developer's architect, and cannot form part of an offer or contract. Whilst every care is taken in providing this information, the Developer cannot be held liable for variations. All illustrations and pictures are artist's impressions only. The information is subject to variations, additions, deletions, substitutions and modifications as may be recommended by the company's architect and/or the relevant approving authorities. The Developer is wholly exempt from any liability on account of any claim in this regard. (1 square metre = 10.764 square feet). E & OE. All dimensions and calculations are done in metric system (M/Sq.m), and imperial system (Ft/Sq.ft) shown is for reference only. All dimensions indicated in the drawing are from unfinished surfaces, excluding plaster thickness and tile thickness.



Artist's Impression

The information depicted herein viz., master plans, floor plans, furniture layout, fittings, illustrations, specifications, designs, dimensions, rendered views, colours, amenities and facilities etc., are subject to change without notifications as may be required by the relevant authorities or the Developer's architect, and cannot form part of an offer or contract. Whilst every care is taken in providing this information, the Developer cannot be held liable for variations. All illustrations and pictures are artist's impressions only. The information is subject to variations, additions, deletions, substitutions and modifications as may be recommended by the company's architect and/or the relevant approving authorities. The Developer is wholly exempt from any liability on account of any claim in this regard. (1 square metre = 10.764 square feet). E & OE. All dimensions and calculations are done in metric system (M/Sq.m), and imperial system (Ft/Sq.ft) shown is for reference only. All dimensions indicated in the drawing are from unfinished surfaces, excluding plaster thickness and tile thickness.



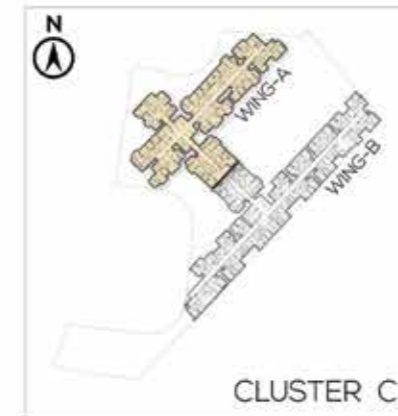
The information depicted herein viz., master plans, floor plans, furniture layout, fittings, illustrations, specifications, designs, dimensions, rendered views, colours, amenities and facilities etc., are subject to change without notifications as may be required by the relevant authorities or the Developer's architect, and cannot form part of an offer or contract. Whilst every care is taken in providing this information, the Developer cannot be held liable for variations. All illustrations and pictures are artist's impressions only. The information is subject to variations, additions, deletions, substitutions and modifications as may be recommended by the company's architect and/or the relevant approving authorities. The Developer is wholly exempt from any liability on account of any claim in this regard. (1 square metre = 10.764 square feet). E & OE. All dimensions and calculations are done in metric system (M/Sq.m), and imperial system (Ft/Sq.ft) shown is for reference only. All dimensions indicated in the drawing are from unfinished surfaces, excluding plaster thickness and tile thickness.



The information depicted herein viz., master plans, floor plans, furniture layout, fittings, illustrations, specifications, designs, dimensions, rendered views, colours, amenities and facilities etc., are subject to change without notifications as may be required by the relevant authorities or the Developer's architect, and cannot form part of an offer or contract. Whilst every care is taken in providing this information, the Developer cannot be held liable for variations. All illustrations and pictures are artist's impressions only. The information is subject to variations, additions, deletions, substitutions and modifications as may be recommended by the company's architect and/or the relevant approving authorities. The Developer is wholly exempt from any liability on account of any claim in this regard. (1 square metre = 10.764 square feet). E & OE. All dimensions and calculations are done in metric system (M/Sq.m), and imperial system (Ft/Sq.ft) shown is for reference only. All dimensions indicated in the drawing are from unfinished surfaces, excluding plaster thickness and tile thickness.

FLOOR PLAN

CLUSTER - C GROUND FLOOR WING - A UNIT NOS 01 - 10



UNIT SERIES:	01	02	03 05	04	06	07	08	09	10
	3BHK 2T TYPE 1B	3BHK 3T TYPE 1B	3BHK 2T TYPE 3A	4BHK 3T +MAID'S ROOM	3BHK 2T TYPE 2A	2BHK 2T TYPE 3	2BHK 2T TYPE 1A	3BHK 2T TYPE 1A	3BHK 3T TYPE 1A
	136.96 SQ.M 1474 SQ.FT	155.86 SQ.M 1678 SQ.FT	137.34 SQ.M 1478 SQ.FT	211.47 SQ.M 2276 SQ.FT	139.17 SQ.M 1498 SQ.FT	89.7 SQ.M 966 SQ.FT	89.59 SQ.M 964 SQ.FT	136.96 SQ.M 1474 SQ.FT	155.86 SQ.M 1678 SQ.FT

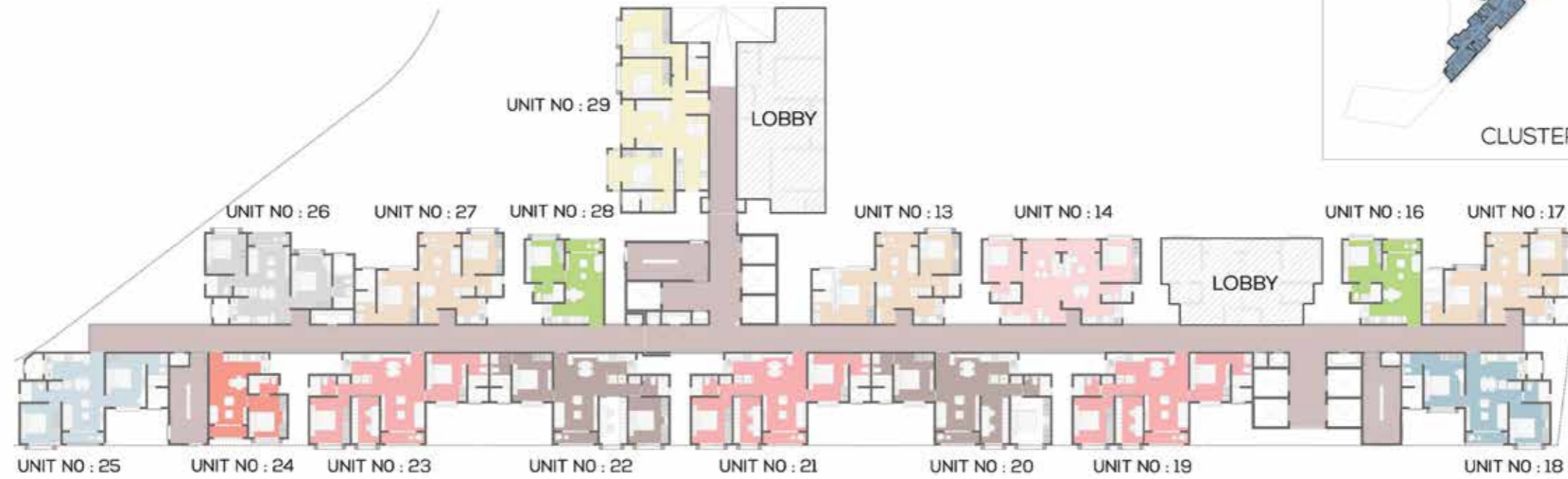
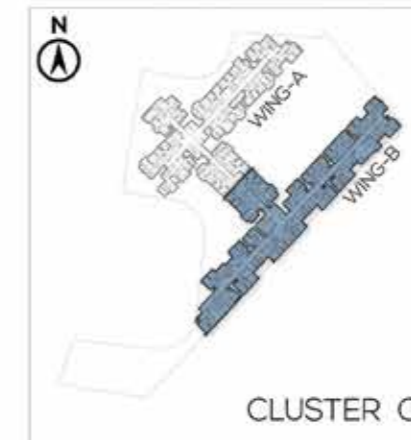


The information depicted herein viz., master plans, floor plans, furniture layout, fittings, illustrations, specifications, designs, dimensions, rendered views, colours, amenities and facilities etc., are subject to change without notifications as may be required by the relevant authorities or the Developer's architect, and cannot form part of an offer or contract. Whilst every care is taken in providing this information, the Developer cannot be held liable for variations. All illustrations and pictures are artist's impressions only. The information is subject to variations, additions, deletions, substitutions and modifications as may be recommended by the company's architect and/or the relevant approving authorities. The Developer is wholly exempt from any liability on account of any claim in this regard. (1 square metre = 10.764 square feet). E & OE. All dimensions and calculations are done in metric system (M/Sq.m), and imperial system (Ft/Sq.ft) shown is for reference only. All dimensions indicated in the drawing are from unfinished surfaces, excluding plaster thickness and tile thickness.

FLOOR PLAN

CLUSTER - C

GROUND FLOOR
WING - B
UNIT NOS 13, 14, 16-29



UNIT SERIES:	2BHK 2T TYPE 2	2BHK 2T STUDY TYPE 1	1BHK TYPE 1A	2 BHK 2T TYPE 1A	2 BHK 2T STUDY TYPE 2A	2 BHK 2T STUDY TYPE 2B	1BHK TYPE 1B	2 BHK 2T TYPE 1B	2BHK 2T TYPE 3	3BHK 2T TYPE 1C
	13, 17, 27	14	16, 28	18	19, 21, 23	20, 22	24	25	26	29
	89.10 SQ.M 959 SQ.FT	106.69 SQ.M 1148 SQ.FT	54.40 SQ.M 586 SQ.FT	89.59 SQ.M 964 SQ.FT	111.59 SQ.M 1201 SQ.FT	111.59 SQ.M 1201 SQ.FT	54.40 SQ.M 586 SQ.FT	89.59 SQ.M 964 SQ.FT	89.7 SQ.M 966 SQ.FT	136.96 SQ.M 1474 SQ.FT

The information depicted herein viz., master plans, floor plans, furniture layout, fittings, illustrations, specifications, designs, dimensions, rendered views, colours, amenities and facilities etc., are subject to change without notifications as may be required by the relevant authorities or the Developer's architect, and cannot form part of an offer or contract. Whilst every care is taken in providing this information, the Developer cannot be held liable for variations. All illustrations and pictures are artist's impressions only. The information is subject to variations, additions, deletions, substitutions and modifications as may be recommended by the company's architect and/or the relevant approving authorities. The Developer is wholly exempt from any liability on account of any claim in this regard. (1 square metre = 10.764 square feet). E & OE. All dimensions and calculations are done in metric system (M/Sq.m), and imperial system (Ft/Sq.ft) shown is for reference only. All dimensions indicated in the drawing are from unfinished surfaces, excluding plaster thickness and tile thickness.

FLOOR PLAN

CLUSTER - C TYPICAL FLOOR WING - A UNIT NOS 01 - 11

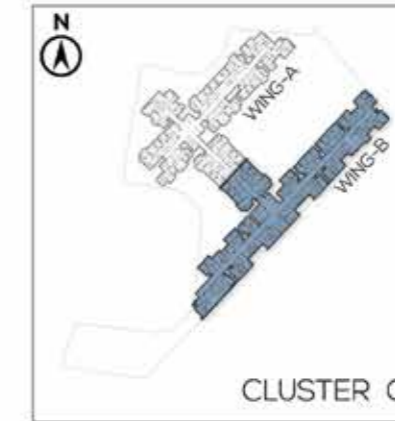


The information depicted herein viz., master plans, floor plans, furniture layout, fittings, illustrations, specifications, designs, dimensions, rendered views, colours, amenities and facilities etc., are subject to change without notifications as may be required by the relevant authorities or the Developer's architect, and cannot form part of an offer or contract. Whilst every care is taken in providing this information, the Developer cannot be held liable for variations. All illustrations and pictures are artist's impressions only. The information is subject to variations, additions, deletions, substitutions and modifications as may be recommended by the company's architect and/or the relevant approving authorities. The Developer is wholly exempt from any liability on account of any claim in this regard. (1 square metre = 10.764 square feet). E & OE. All dimensions and calculations are done in metric system (M/Sq.m), and imperial system (Ft/Sq.ft) shown is for reference only. All dimensions indicated in the drawing are from unfinished surfaces, excluding plaster thickness and tile thickness.

FLOOR PLAN

CLUSTER - C

TYPICAL FLOOR
WING - B
UNIT NOS 12 - 29



UNIT SERIES:	3BHK 2T TYPE 3B	2BHK 2T TYPE 2	2BHK 2T STUDY TYPE 1	1BHK TYPE 1A	2 BHK 2T TYPE 1A	2 BHK 2T STUDY TYPE 2A	2 BHK 2T STUDY TYPE 2B	1BHK TYPE 1B	2 BHK 2T TYPE 1B	2BHK 2T TYPE 3	3BHK 2T TYPE 1C
	12	13 17 27	14 15	16 28	18	19 21 23	20 22	24	25	26	29
	137.34 SQ.M 1478 SQ.FT	89.10 SQ.M 959 SQ.FT	106.69 SQ.M 1148 SQ.FT	54.40 SQ.M 586 SQ.FT	89.59 SQ.M 964 SQ.FT	111.59 SQ.M 1201 SQ.FT	111.59 SQ.M 1201 SQ.FT	54.40 SQ.M 586 SQ.FT	89.59 SQ.M 964 SQ.FT	89.7 SQ.M 966 SQ.FT	136.96 SQ.M 1474 SQ.FT

The information depicted herein viz., master plans, floor plans, furniture layout, fittings, illustrations, specifications, designs, dimensions, rendered views, colours, amenities and facilities etc., are subject to change without notifications as may be required by the relevant authorities or the Developer's architect, and cannot form part of an offer or contract. Whilst every care is taken in providing this information, the Developer cannot be held liable for variations. All illustrations and pictures are artist's impressions only. The information is subject to variations, additions, deletions, substitutions and modifications as may be recommended by the company's architect and/or the relevant approving authorities. The Developer is wholly exempt from any liability on account of any claim in this regard. (1 square metre = 10.764 square feet). E & OE. All dimensions and calculations are done in metric system (M/Sq.m), and imperial system (Ft/Sq.ft) shown is for reference only. All dimensions indicated in the drawing are from unfinished surfaces, excluding plaster thickness and tile thickness.

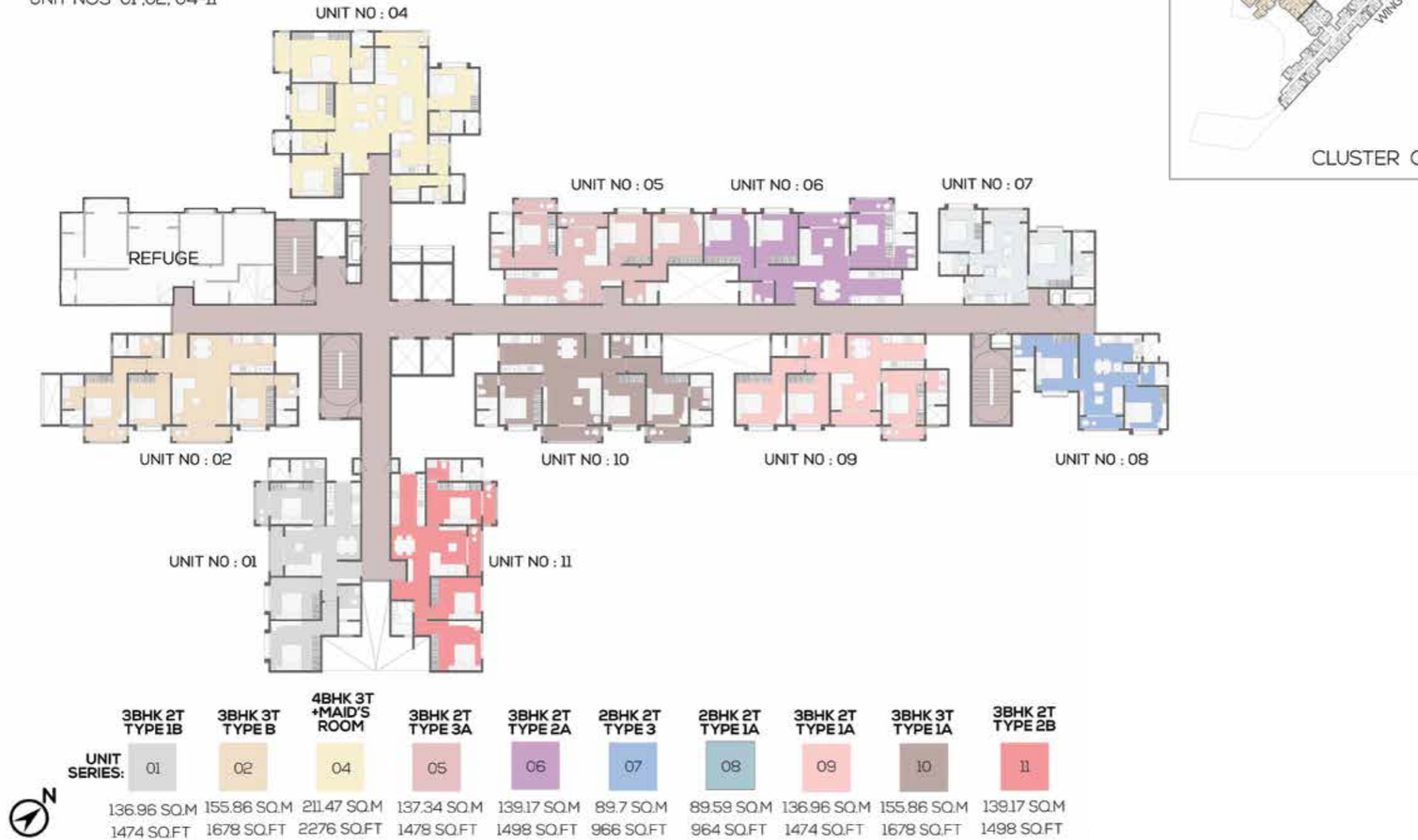
FLOOR PLAN

CLUSTER - C

REFUGE FLOOR (19TH FLOOR)

WING - A

UNIT NOS 01,02,04-11



The information depicted herein viz., master plans, floor plans, furniture layout, fittings, illustrations, specifications, designs, dimensions, rendered views, colours, amenities and facilities etc., are subject to change without notifications as may be required by the relevant authorities or the Developer's architect, and cannot form part of an offer or contract. Whilst every care is taken in providing this information, the Developer cannot be held liable for variations. All illustrations and pictures are artist's impressions only. The information is subject to variations, additions, deletions, substitutions and modifications as may be recommended by the company's architect and/or the relevant approving authorities. The Developer is wholly exempt from any liability on account of any claim in this regard. (1 square metre = 10.764 square feet). E & OE. All dimensions and calculations are done in metric system (M/Sq.m), and imperial system (Ft/Sq.ft) shown is for reference only. All dimensions indicated in the drawing are from unfinished surfaces, excluding plaster thickness and tile thickness.

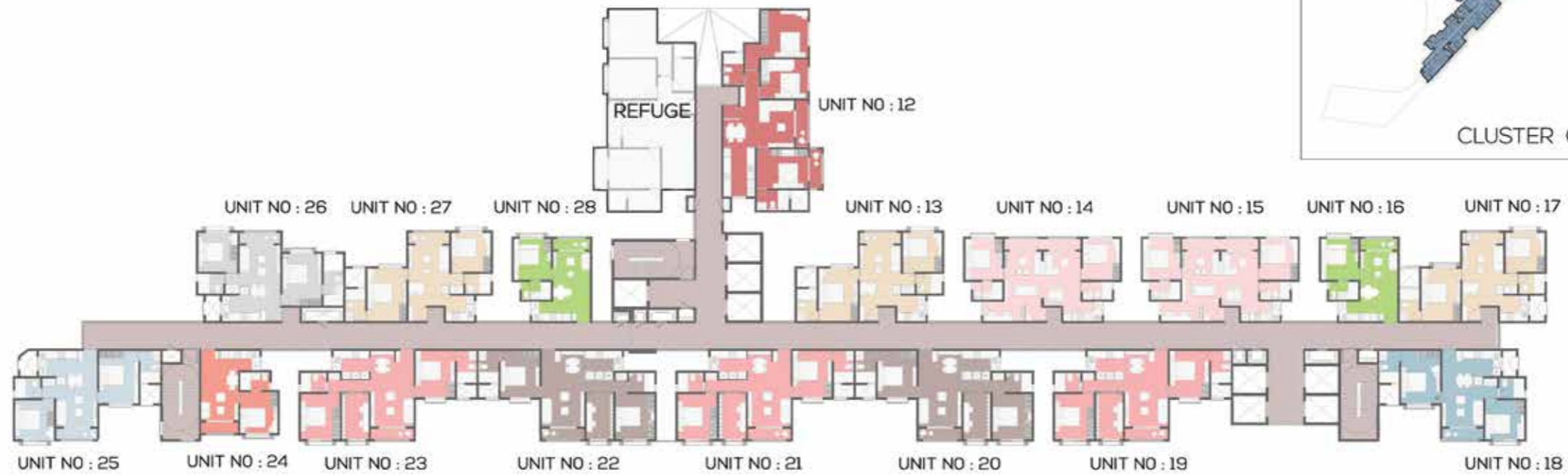
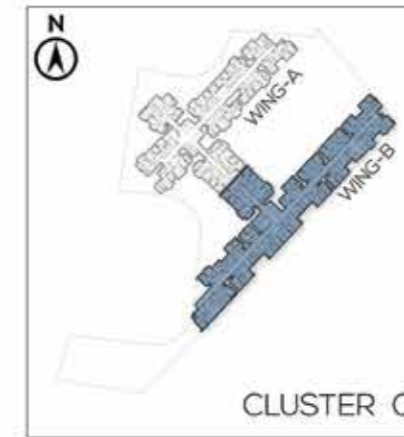
FLOOR PLAN

CLUSTER - C

REFUGE FLOOR (19TH FLOOR)

WING - B

UNIT NOS 12 - 28



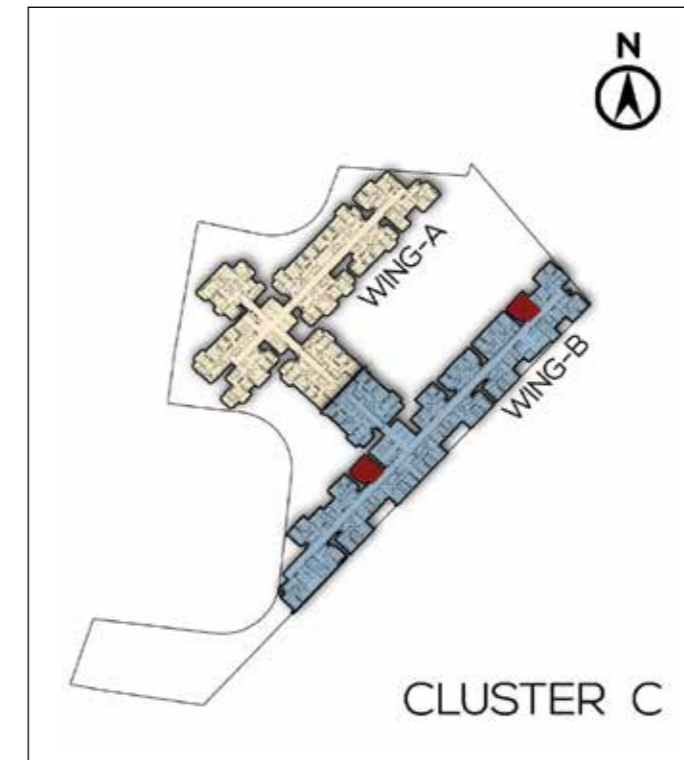
UNIT SERIES:	3BHK 2T TYPE 3B	2BHK 2T TYPE 2	2BHK 2T STUDY TYPE 1	1BHK TYPE 1A	2 BHK 2T TYPE 1A	2 BHK 2T STUDY TYPE 2A	2 BHK 2T STUDY TYPE 2B	1BHK TYPE 1B	2 BHK 2T TYPE 1B	2BHK 2T TYPE 3
	12	13 17 27	14 15	16 28	18	19 21 23	20 22	24	25	26
	137.34 SQ.M 1478 SQ.FT	89.10 SQ.M 959 SQ.FT	106.69 SQ.M 1148 SQ.FT	54.40 SQ.M 586 SQ.FT	89.59 SQ.M 964 SQ.FT	111.59 SQ.M 1201 SQ.FT	111.59 SQ.M 1201 SQ.FT	54.40 SQ.M 586 SQ.FT	89.59 SQ.M 964 SQ.FT	89.7 SQ.M 966 SQ.FT

The information depicted herein viz., master plans, floor plans, furniture layout, fittings, illustrations, specifications, designs, dimensions, rendered views, colours, amenities and facilities etc., are subject to change without notifications as may be required by the relevant authorities or the Developer's architect, and cannot form part of an offer or contract. Whilst every care is taken in providing this information, the Developer cannot be held liable for variations. All illustrations and pictures are artist's impressions only. The information is subject to variations, additions, deletions, substitutions and modifications as may be recommended by the company's architect and/or the relevant approving authorities. The Developer is wholly exempt from any liability on account of any claim in this regard. (1 square metre = 10.764 square feet). E & OE. All dimensions and calculations are done in metric system (M/Sq.m), and imperial system (Ft/Sq.ft) shown is for reference only. All dimensions indicated in the drawing are from unfinished surfaces, excluding plaster thickness and tile thickness.

UNIT PLAN- CIELO AT BRIGADE VALENCIA

1 BHK 1T-TYPE 1A

C 0016 - C 2216
C 0028 - C 2228



SUPER BUILT-UP AREA
54.40 Sq.m / 586 Sq.ft

UNIT CARPET AREA
31.77 Sq.m / 342 Sq.ft

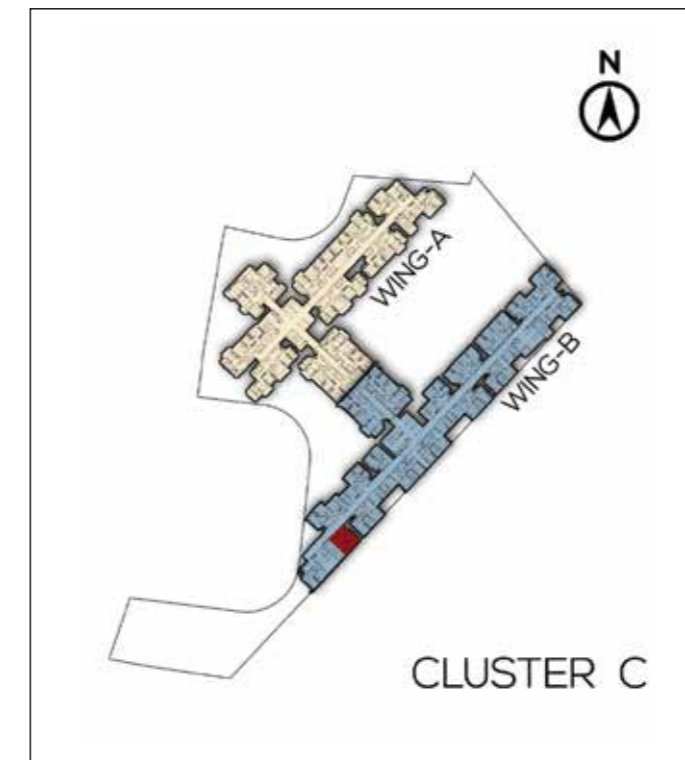
BALCONY AREA
2.42 Sq.m / 26 Sq.ft

The information depicted herein viz., master plans, floor plans, furniture layout, fittings, illustrations, specifications, designs, dimensions, rendered views, colours, amenities and facilities etc., are subject to change without notifications as may be required by the relevant authorities or the Developer's architect, and cannot form part of an offer or contract. Whilst every care is taken in providing this information, the Developer cannot be held liable for variations. All illustrations and pictures are artist's impressions only. The information is subject to variations, additions, deletions, substitutions and modifications as may be recommended by the company's architect and/or the relevant approving authorities. The Developer is wholly exempt from any liability on account of any claim in this regard. (1 square metre = 10.764 square feet). E & OE. All dimensions and calculations are done in metric system (M/Sq.m), and imperial system (Ft/Sq.ft) shown is for reference only. All dimensions indicated in the drawing are from unfinished surfaces, excluding plaster thickness and tile thickness.

UNIT PLAN- CIELO AT BRIGADE VALENCIA

1 BHK 1T-TYPE 1B

C 0024 - C 2224



SUPER BUILT-UP AREA

54.40 Sq.m / 586 Sq.ft

UNIT CARPET AREA

31.77 Sq.m / 342 Sq.ft

BALCONY AREA

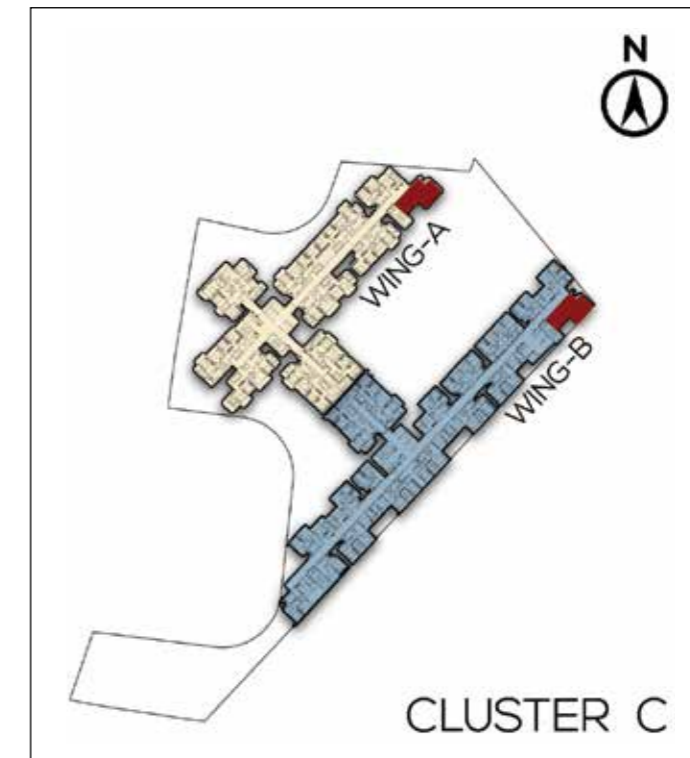
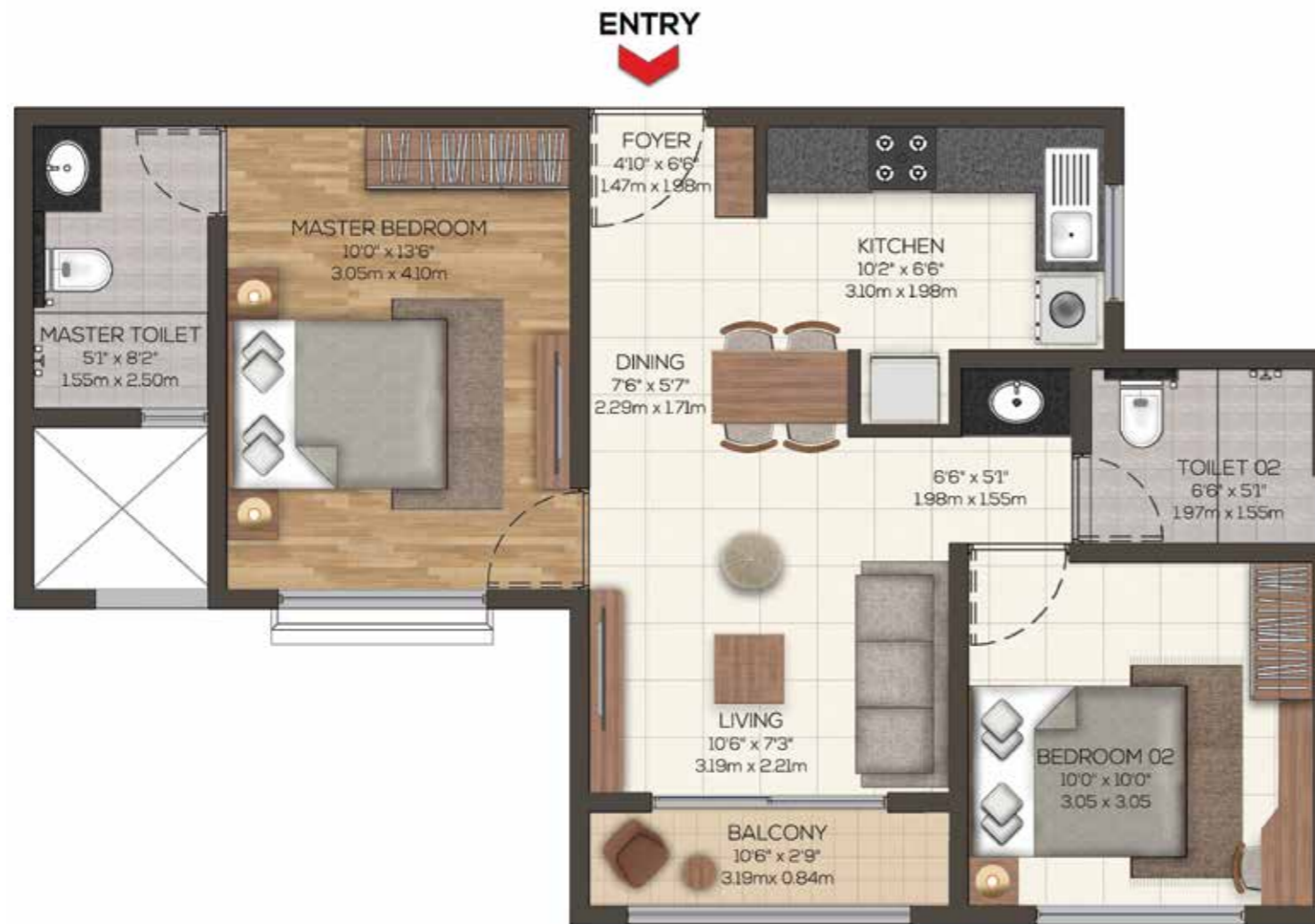
2.42 Sq.m / 26 Sq.ft

The information depicted herein viz., master plans, floor plans, furniture layout, fittings, illustrations, specifications, designs, dimensions, rendered views, colours, amenities and facilities etc., are subject to change without notifications as may be required by the relevant authorities or the Developer's architect, and cannot form part of an offer or contract. Whilst every care is taken in providing this information, the Developer cannot be held liable for variations. All illustrations and pictures are artist's impressions only. The information is subject to variations, additions, deletions, substitutions and modifications as may be recommended by the company's architect and/or the relevant approving authorities. The Developer is wholly exempt from any liability on account of any claim in this regard. (1 square metre = 10.764 square feet). E & OE. All dimensions and calculations are done in metric system (M/Sq.m), and imperial system (Ft/Sq.ft) shown is for reference only. All dimensions indicated in the drawing are from unfinished surfaces, excluding plaster thickness and tile thickness.

UNIT PLAN- CIELO AT BRIGADE VALENCIA

2BHK 2T-TYPE 1A

C 0008 - 2208
C 0018 - 2218



SUPER BUILT-UP AREA
89.59 Sq.m / 964 Sq.ft

UNIT CARPET AREA
54.45 Sq.m / 586 Sq.ft

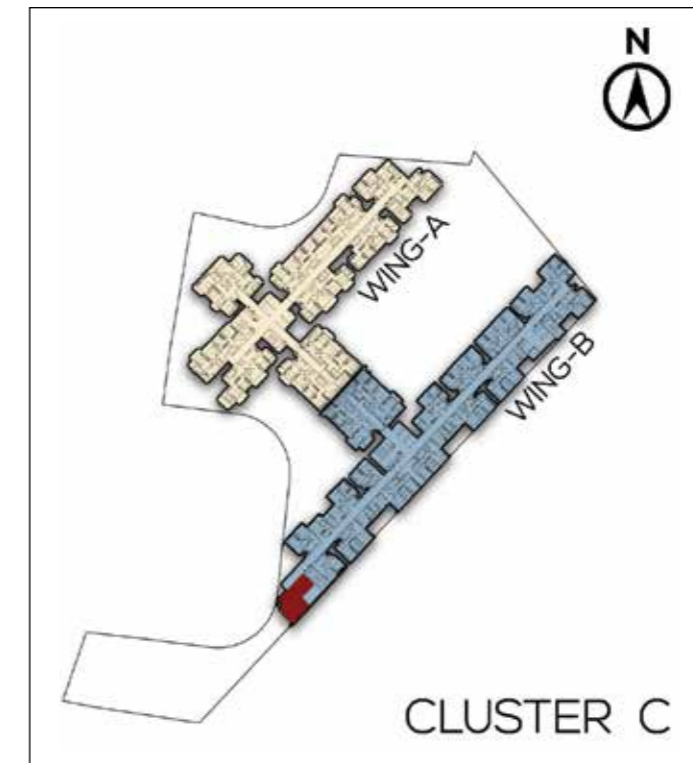
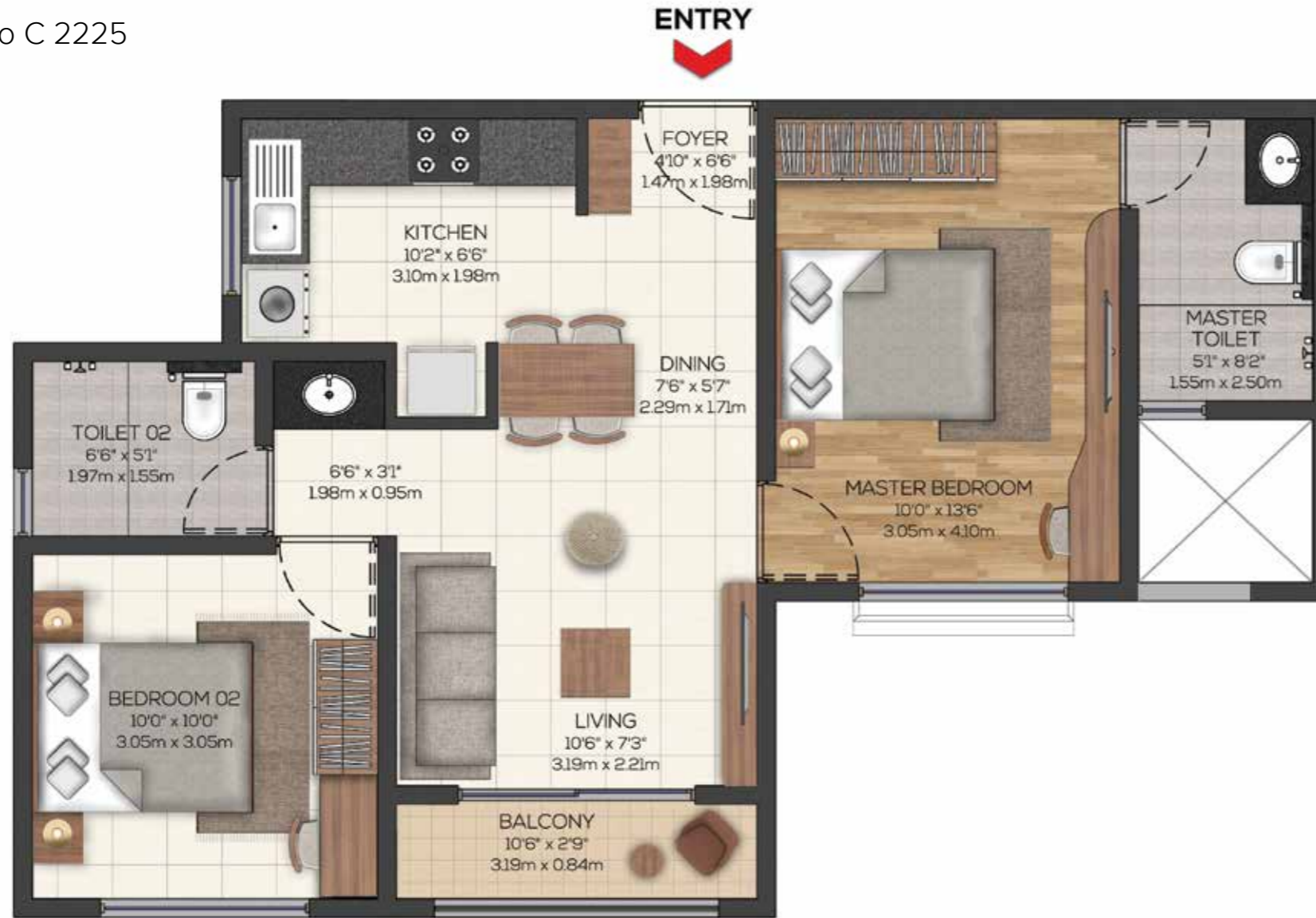
BALCONY AREA
2.68 Sq.m / 29 Sq.ft

The information depicted herein viz., master plans, floor plans, furniture layout, fittings, illustrations, specifications, designs, dimensions, rendered views, colours, amenities and facilities etc., are subject to change without notifications as may be required by the relevant authorities or the Developer's architect, and cannot form part of an offer or contract. Whilst every care is taken in providing this information, the Developer cannot be held liable for variations. All illustrations and pictures are artist's impressions only. The information is subject to variations, additions, deletions, substitutions and modifications as may be recommended by the company's architect and/or the relevant approving authorities. The Developer is wholly exempt from any liability on account of any claim in this regard. (1 square metre = 10.764 square feet). E & OE. All dimensions and calculations are done in metric system (M/Sq.m), and imperial system (Ft/Sq.ft) shown is for reference only. All dimensions indicated in the drawing are from unfinished surfaces, excluding plaster thickness and tile thickness.

UNIT PLAN- CIELO AT BRIGADE VALENCIA

2BHK 2T-TYPE 1B

C 0025 to C 2225



SUPER BUILT-UP AREA

89.59 Sq.m / 964 Sq.ft

UNIT CARPET AREA

54.45 Sq.m / 586 Sq.ft

BALCONY AREA

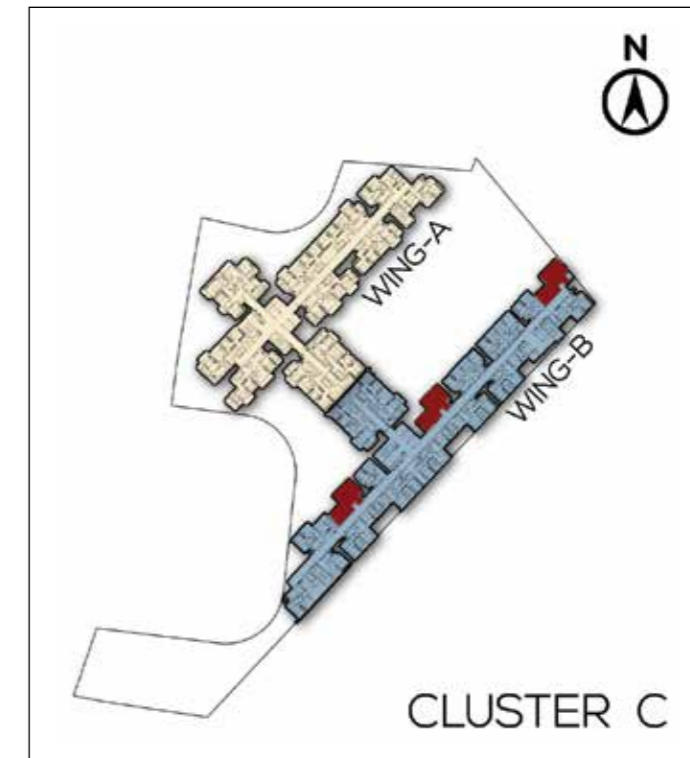
2.68 Sq.m / 29 Sq.ft

The information depicted herein viz., master plans, floor plans, furniture layout, fittings, illustrations, specifications, designs, dimensions, rendered views, colours, amenities and facilities etc., are subject to change without notifications as may be required by the relevant authorities or the Developer's architect, and cannot form part of an offer or contract. Whilst every care is taken in providing this information, the Developer cannot be held liable for variations. All illustrations and pictures are artist's impressions only. The information is subject to variations, additions, deletions, substitutions and modifications as may be recommended by the company's architect and/or the relevant approving authorities. The Developer is wholly exempt from any liability on account of any claim in this regard. (1 square metre = 10.764 square feet). E & OE. All dimensions and calculations are done in metric system (M/Sq.m), and imperial system (Ft/Sq.ft) shown is for reference only. All dimensions indicated in the drawing are from unfinished surfaces, excluding plaster thickness and tile thickness.

UNIT PLAN- CIELO AT BRIGADE VALENCIA

2BHK 2T-TYPE 2

C 0013 - 2213
 C 0017 - 2217
 C 0027 - 2227



SUPER BUILT-UP AREA
 89.10 Sq.m / 959 Sq.ft

UNIT CARPET AREA
 53.75 Sq.m / 579 Sq.ft

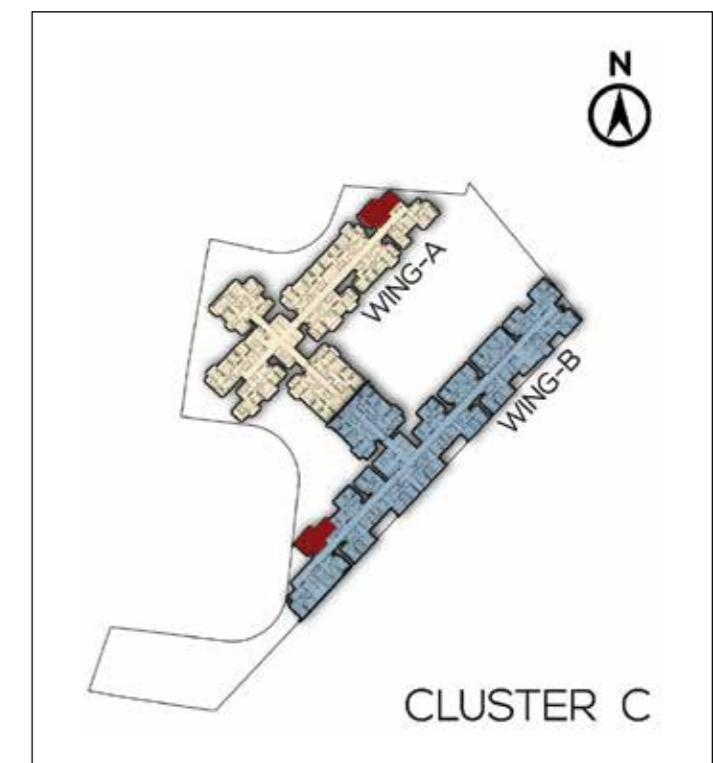
BALCONY AREA
 2.68 Sq.m / 29 Sq.ft

The information depicted herein viz., master plans, floor plans, furniture layout, fittings, illustrations, specifications, designs, dimensions, rendered views, colours, amenities and facilities etc., are subject to change without notifications as may be required by the relevant authorities or the Developer's architect, and cannot form part of an offer or contract. Whilst every care is taken in providing this information, the Developer cannot be held liable for variations. All illustrations and pictures are artist's impressions only. The information is subject to variations, additions, deletions, substitutions and modifications as may be recommended by the company's architect and/or the relevant approving authorities. The Developer is wholly exempt from any liability on account of any claim in this regard. (1 square metre = 10.764 square feet). E & OE. All dimensions and calculations are done in metric system (M/Sq.m), and imperial system (Ft/Sq.ft) shown is for reference only. All dimensions indicated in the drawing are from unfinished surfaces, excluding plaster thickness and tile thickness.

UNIT PLAN- CIELO AT BRIGADE VALENCIA

2BHK 2T-TYPE 3

C 0007 to 2207
C 0026 to 2226



SUPER BUILT-UP AREA
89.7 Sq.m / 966 Sq.ft

UNIT CARPET AREA
54.19 Sq.m / 583 Sq.ft

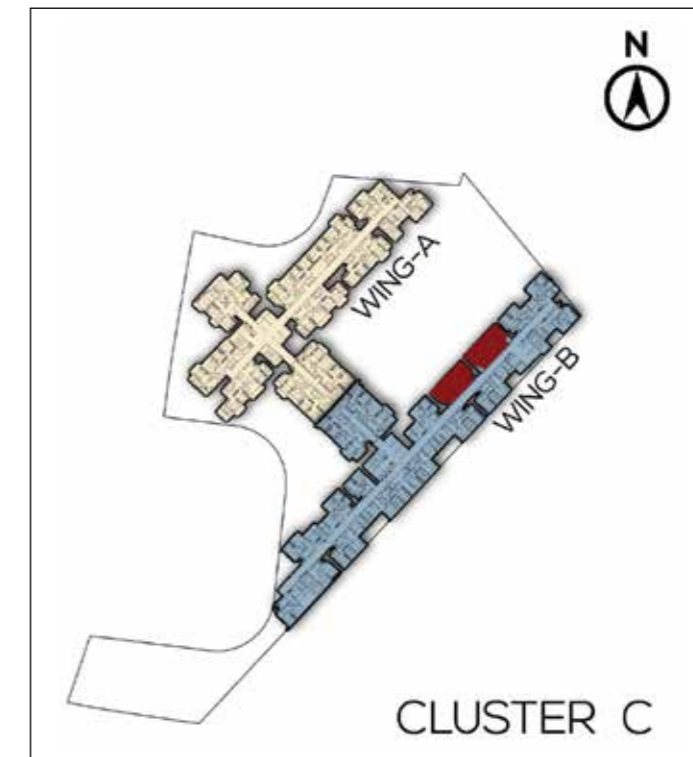
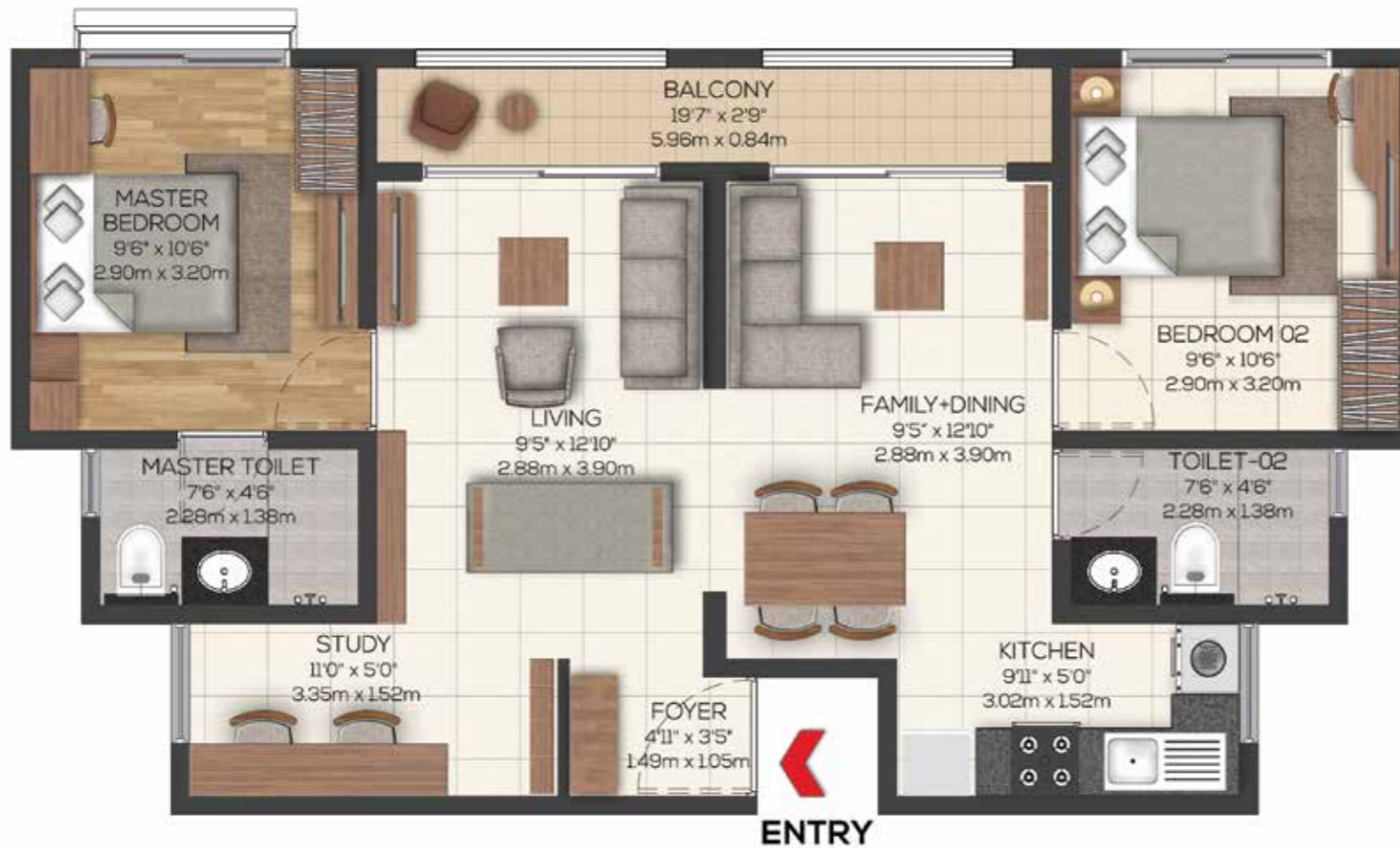
BALCONY AREA
2.68 Sq.m / 29 Sq.ft

The information depicted herein viz., master plans, floor plans, furniture layout, fittings, illustrations, specifications, designs, dimensions, rendered views, colours, amenities and facilities etc., are subject to change without notifications as may be required by the relevant authorities or the Developer's architect, and cannot form part of an offer or contract. Whilst every care is taken in providing this information, the Developer cannot be held liable for variations. All illustrations and pictures are artist's impressions only. The information is subject to variations, additions, deletions, substitutions and modifications as may be recommended by the company's architect and/or the relevant approving authorities. The Developer is wholly exempt from any liability on account of any claim in this regard. (1 square metre = 10.764 square feet). E & OE. All dimensions and calculations are done in metric system (M/Sq.m), and imperial system (Ft/Sq.ft) shown is for reference only. All dimensions indicated in the drawing are from unfinished surfaces, excluding plaster thickness and tile thickness.

UNIT PLAN- CIELO AT BRIGADE VALENCIA

2 BHK 2T STUDY-TYPE 1

C 0014 - 2214
C 0115 - 2215



SUPER BUILT-UP AREA

106.69 Sq.m / 1148 Sq.ft

UNIT CARPET AREA

62.98 Sq.m / 678 Sq.ft

BALCONY AREA

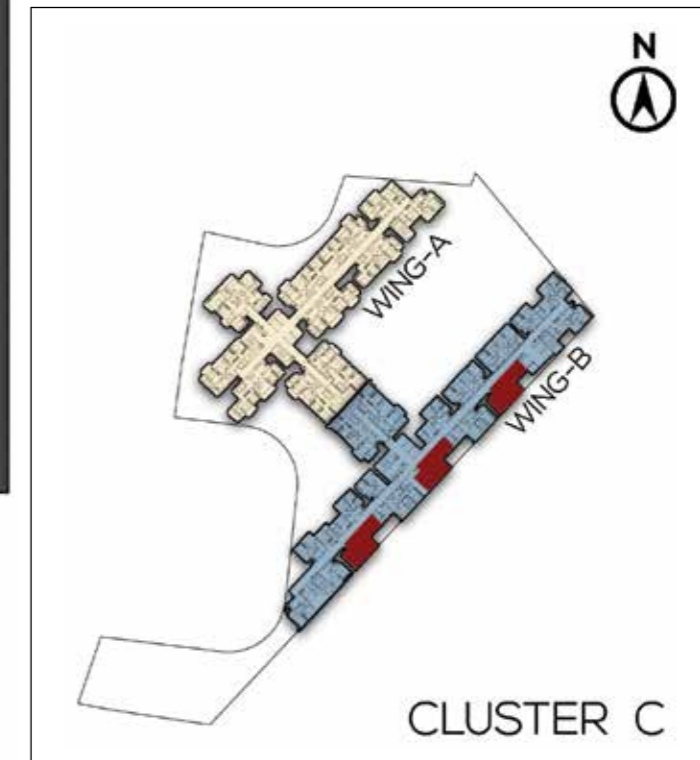
5.00 Sq.m / 54 Sq.ft

The information depicted herein viz., master plans, floor plans, furniture layout, fittings, illustrations, specifications, designs, dimensions, rendered views, colours, amenities and facilities etc., are subject to change without notifications as may be required by the relevant authorities or the Developer's architect, and cannot form part of an offer or contract. Whilst every care is taken in providing this information, the Developer cannot be held liable for variations. All illustrations and pictures are artist's impressions only. The information is subject to variations, additions, deletions, substitutions and modifications as may be recommended by the company's architect and/or the relevant approving authorities. The Developer is wholly exempt from any liability on account of any claim in this regard. (1 square metre = 10.764 square feet). E & OE. All dimensions and calculations are done in metric system (M/Sq.m), and imperial system (Ft/Sq.ft) shown is for reference only. All dimensions indicated in the drawing are from unfinished surfaces, excluding plaster thickness and tile thickness.

UNIT PLAN- CIELO AT BRIGADE VALENCIA

2 BHK 2T STUDY-TYPE 2A

C 0019 to 2219
 C 0021 to 2221
 C 0023 to 2223



SUPER BUILT-UP AREA
 111.59 Sq.m / 1201 Sq.ft

UNIT CARPET AREA
 68.96 Sq.m / 742 Sq.ft

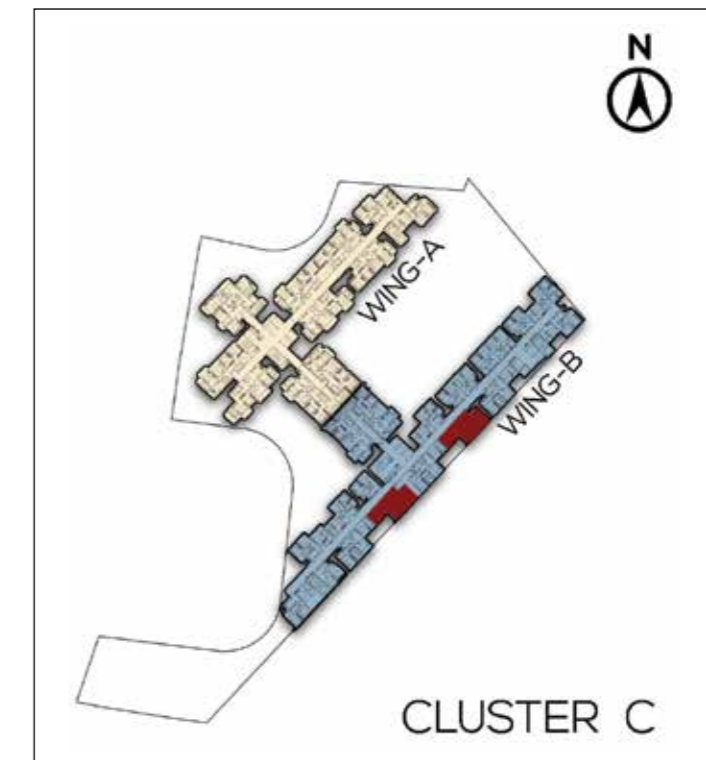
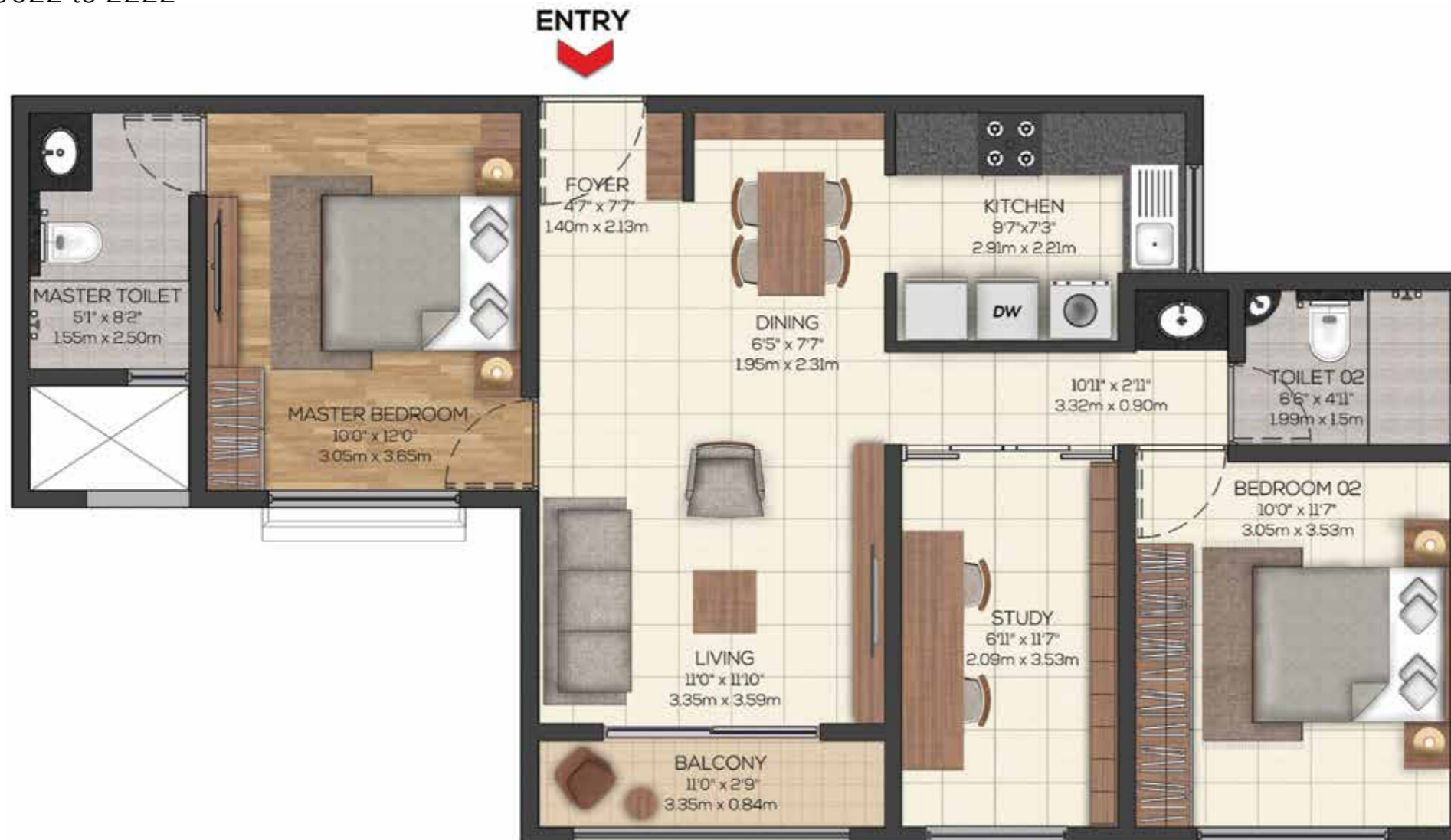
BALCONY AREA
 2.8 Sq.m / 30 Sq.ft

The information depicted herein viz., master plans, floor plans, furniture layout, fittings, illustrations, specifications, designs, dimensions, rendered views, colours, amenities and facilities etc., are subject to change without notifications as may be required by the relevant authorities or the Developer's architect, and cannot form part of an offer or contract. Whilst every care is taken in providing this information, the Developer cannot be held liable for variations. All illustrations and pictures are artist's impressions only. The information is subject to variations, additions, deletions, substitutions and modifications as may be recommended by the company's architect and/or the relevant approving authorities. The Developer is wholly exempt from any liability on account of any claim in this regard. (1 square metre = 10.764 square feet). E & OE. All dimensions and calculations are done in metric system (M/Sq.m), and imperial system (Ft/Sq.ft) shown is for reference only. All dimensions indicated in the drawing are from unfinished surfaces, excluding plaster thickness and tile thickness.

UNIT PLAN- CIELO AT BRIGADE VALENCIA

2 BHK 2T STUDY-TYPE 2B

C 0020 to 2220
C 0022 to 2222



SUPER BUILT-UP AREA
111.59 Sq.m / 1201 Sq.ft

UNIT CARPET AREA
68.96 Sq.m / 742 Sq.ft

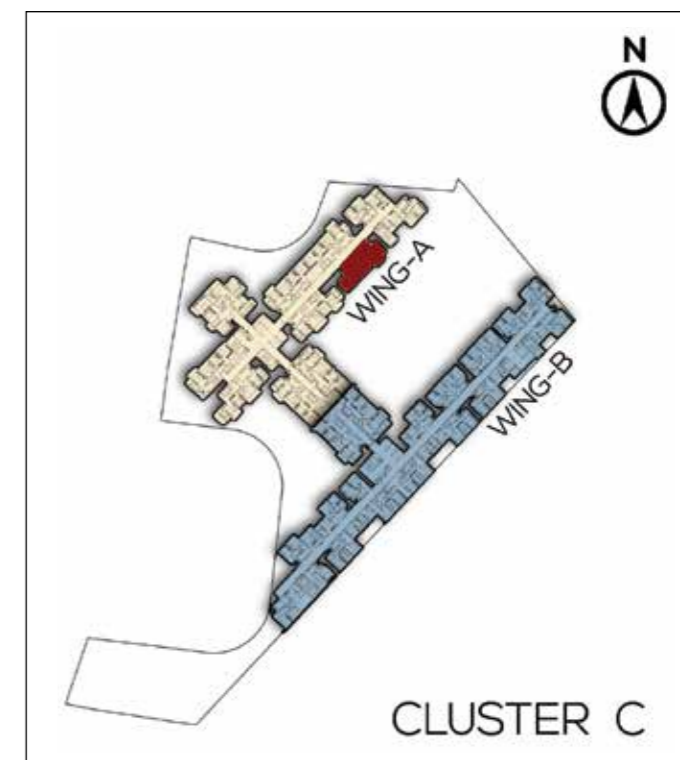
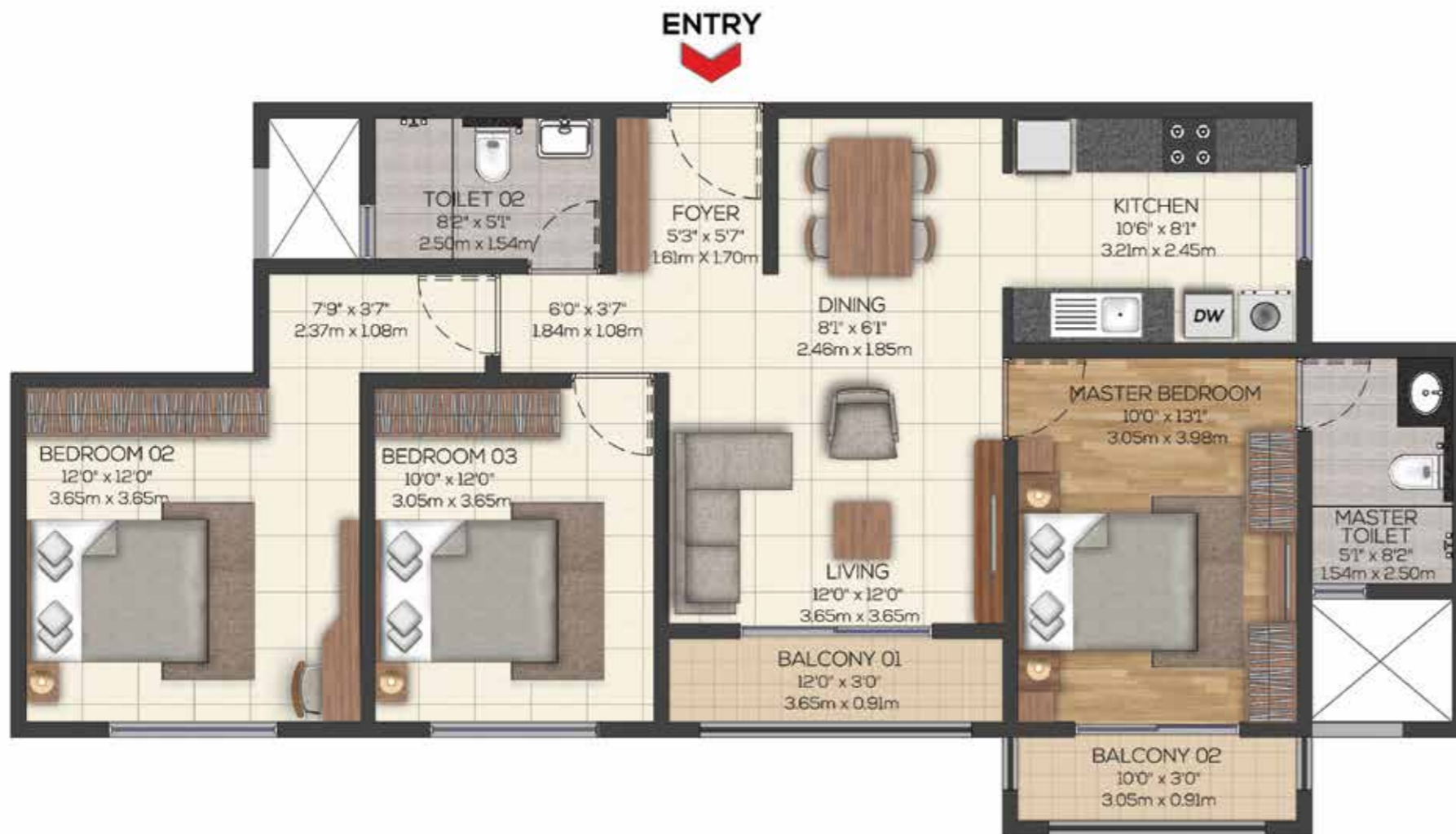
BALCONY AREA
2.8 Sq.m / 30 Sq.ft

The information depicted herein viz., master plans, floor plans, furniture layout, fittings, illustrations, specifications, designs, dimensions, rendered views, colours, amenities and facilities etc., are subject to change without notifications as may be required by the relevant authorities or the Developer's architect, and cannot form part of an offer or contract. Whilst every care is taken in providing this information, the Developer cannot be held liable for variations. All illustrations and pictures are artist's impressions only. The information is subject to variations, additions, deletions, substitutions and modifications as may be recommended by the company's architect and/or the relevant approving authorities. The Developer is wholly exempt from any liability on account of any claim in this regard. (1 square metre = 10.764 square feet). E & OE. All dimensions and calculations are done in metric system (M/Sq.m), and imperial system (Ft/Sq.ft) shown is for reference only. All dimensions indicated in the drawing are from unfinished surfaces, excluding plaster thickness and tile thickness.

UNIT PLAN- CIELO AT BRIGADE VALENCIA

3BHK 2T-TYPE 1A

C- 0009 to 2209



SUPER BUILT-UP AREA
136.96 Sq.m / 1,474 Sq.ft

UNIT CARPET AREA
81.75 Sq.m / 880 Sq.ft

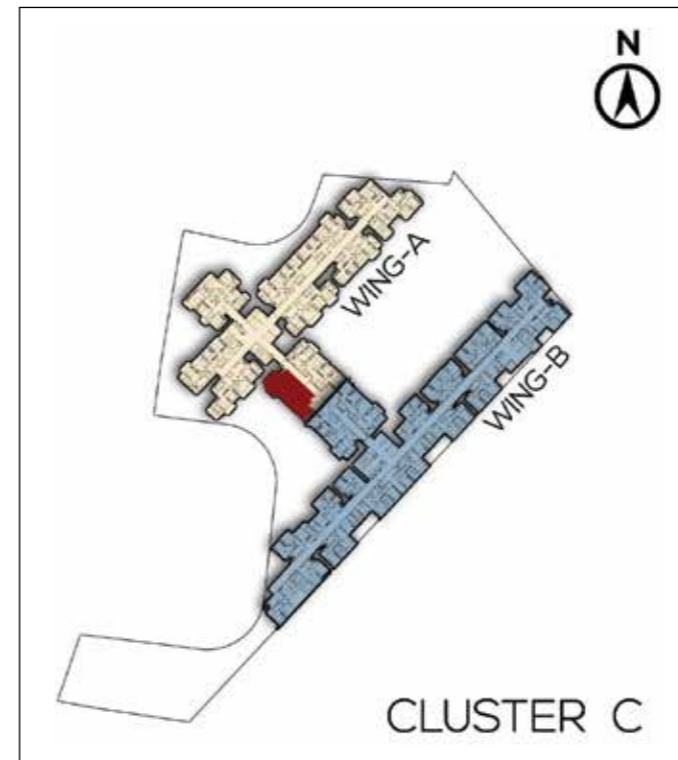
BALCONY AREA
6.12 Sq.m / 66 Sq.ft

The information depicted herein viz., master plans, floor plans, furniture layout, fittings, illustrations, specifications, designs, dimensions, rendered views, colours, amenities and facilities etc., are subject to change without notifications as may be required by the relevant authorities or the Developer's architect, and cannot form part of an offer or contract. Whilst every care is taken in providing this information, the Developer cannot be held liable for variations. All illustrations and pictures are artist's impressions only. The information is subject to variations, additions, deletions, substitutions and modifications as may be recommended by the company's architect and/or the relevant approving authorities. The Developer is wholly exempt from any liability on account of any claim in this regard. (1 square metre = 10.764 square feet). E & OE. All dimensions and calculations are done in metric system (M/Sq.m), and imperial system (Ft/Sq.ft) shown is for reference only. All dimensions indicated in the drawing are from unfinished surfaces, excluding plaster thickness and tile thickness.

UNIT PLAN- CIELO AT BRIGADE VALENCIA

3BHK 2T-TYPE 1B

C 0001 - 2201



SUPER BUILT-UP AREA
136.96 Sq.m / 1474 Sq.ft

UNIT CARPET AREA
81.75 Sq.m / 880 Sq.ft

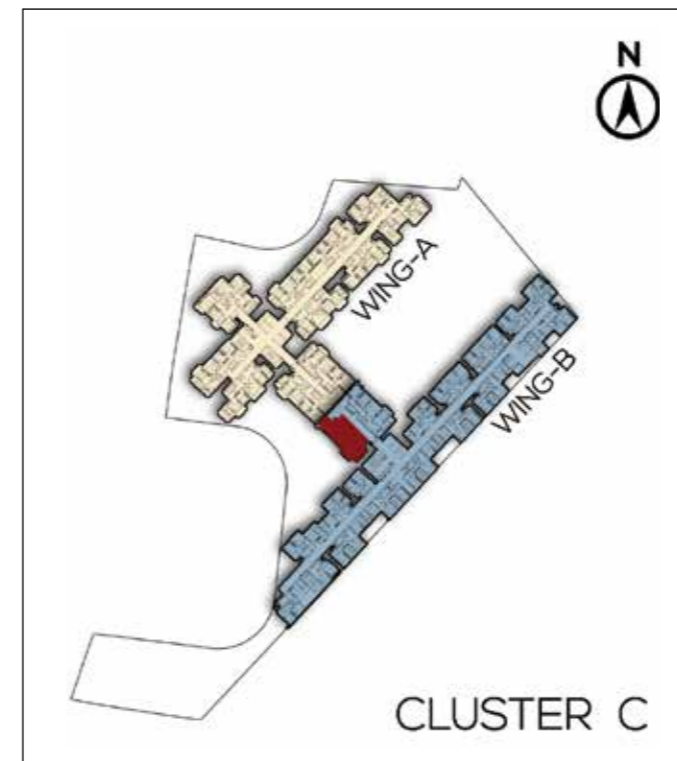
BALCONY AREA
6.12 Sq.m / 66 Sq.ft

The information depicted herein viz., master plans, floor plans, furniture layout, fittings, illustrations, specifications, designs, dimensions, rendered views, colours, amenities and facilities etc., are subject to change without notifications as may be required by the relevant authorities or the Developer's architect, and cannot form part of an offer or contract. Whilst every care is taken in providing this information, the Developer cannot be held liable for variations. All illustrations and pictures are artist's impressions only. The information is subject to variations, additions, deletions, substitutions and modifications as may be recommended by the company's architect and/or the relevant approving authorities. The Developer is wholly exempt from any liability on account of any claim in this regard. (1 square metre = 10.764 square feet). E & OE. All dimensions and calculations are done in metric system (M/Sq.m), and imperial system (Ft/Sq.ft) shown is for reference only. All dimensions indicated in the drawing are from unfinished surfaces, excluding plaster thickness and tile thickness.

UNIT PLAN- CIELO AT BRIGADE VALENCIA

3BHK 2T-TYPE 1C

C 0029 to 1829,
2029 to 2229



SUPER BUILT-UP AREA
136.96 Sq.m / 1474 Sq.ft

UNIT CARPET AREA
81.75 Sq.m / 880 Sq.ft

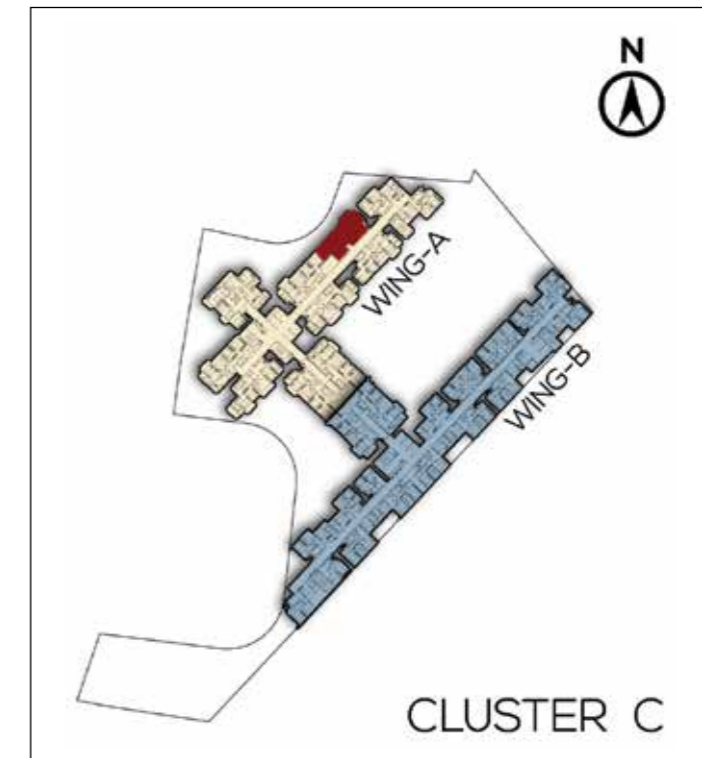
BALCONY AREA
6.12 Sq.m / 66 Sq.ft

The information depicted herein viz., master plans, floor plans, furniture layout, fittings, illustrations, specifications, designs, dimensions, rendered views, colours, amenities and facilities etc., are subject to change without notifications as may be required by the relevant authorities or the Developer's architect, and cannot form part of an offer or contract. Whilst every care is taken in providing this information, the Developer cannot be held liable for variations. All illustrations and pictures are artist's impressions only. The information is subject to variations, additions, deletions, substitutions and modifications as may be recommended by the company's architect and/or the relevant approving authorities. The Developer is wholly exempt from any liability on account of any claim in this regard. (1 square metre = 10.764 square feet). E & OE. All dimensions and calculations are done in metric system (M/Sq.m), and imperial system (Ft/Sq.ft) shown is for reference only. All dimensions indicated in the drawing are from unfinished surfaces, excluding plaster thickness and tile thickness.

UNIT PLAN- CIELO AT BRIGADE VALENCIA

3BHK 2T-TYPE 2A

C 0006 to 2206



SUPER BUILT-UP AREA
139.17 Sq.m / 1498 Sq.ft

UNIT CARPET AREA
83.41 Sq.m / 898 Sq.ft

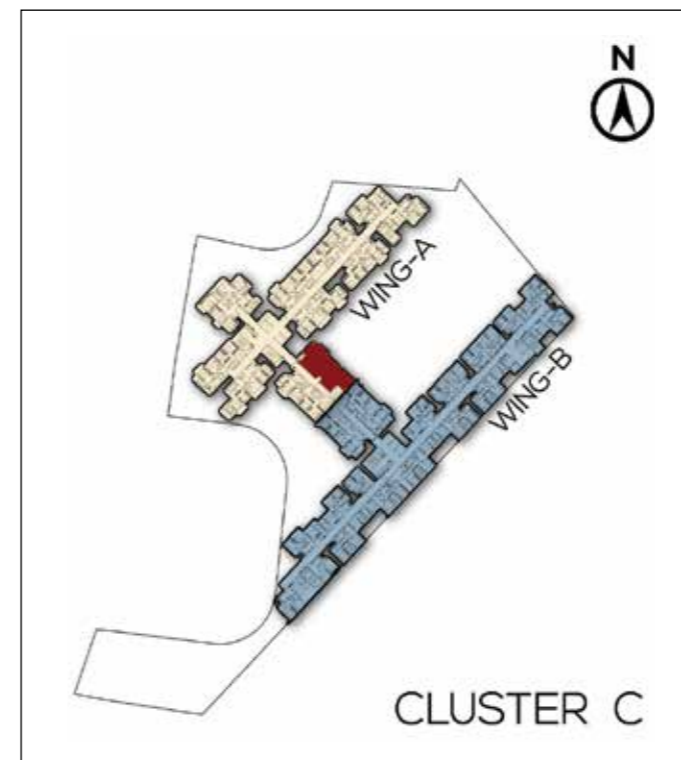
BALCONY AREA
6.12 Sq.m / 66 Sq.ft

The information depicted herein viz., master plans, floor plans, furniture layout, fittings, illustrations, specifications, designs, dimensions, rendered views, colours, amenities and facilities etc., are subject to change without notifications as may be required by the relevant authorities or the Developer's architect, and cannot form part of an offer or contract. Whilst every care is taken in providing this information, the Developer cannot be held liable for variations. All illustrations and pictures are artist's impressions only. The information is subject to variations, additions, deletions, substitutions and modifications as may be recommended by the company's architect and/or the relevant approving authorities. The Developer is wholly exempt from any liability on account of any claim in this regard. (1 square metre = 10.764 square feet). E & OE. All dimensions and calculations are done in metric system (M/Sq.m), and imperial system (Ft/Sq.ft) shown is for reference only. All dimensions indicated in the drawing are from unfinished surfaces, excluding plaster thickness and tile thickness.

UNIT PLAN- CIELO AT BRIGADE VALENCIA

3BHK 2T-TYPE 2B

C 0111 to 2211



SUPER BUILT-UP AREA
139.17 Sq.m / 1498 Sq.ft

UNIT CARPET AREA
83.41 Sq.m / 898 Sq.ft

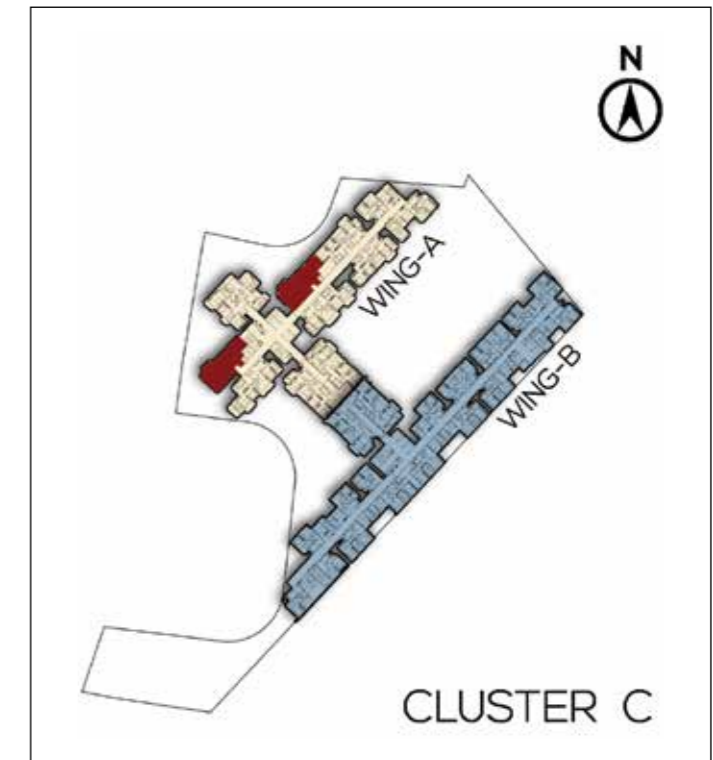
BALCONY AREA
6.12 Sq.m / 66 Sq.ft

The information depicted herein viz., master plans, floor plans, furniture layout, fittings, illustrations, specifications, designs, dimensions, rendered views, colours, amenities and facilities etc., are subject to change without notifications as may be required by the relevant authorities or the Developer's architect, and cannot form part of an offer or contract. Whilst every care is taken in providing this information, the Developer cannot be held liable for variations. All illustrations and pictures are artist's impressions only. The information is subject to variations, additions, deletions, substitutions and modifications as may be recommended by the company's architect and/or the relevant approving authorities. The Developer is wholly exempt from any liability on account of any claim in this regard. (1 square metre = 10.764 square feet). E & OE. All dimensions and calculations are done in metric system (M/Sq.m), and imperial system (Ft/Sq.ft) shown is for reference only. All dimensions indicated in the drawing are from unfinished surfaces, excluding plaster thickness and tile thickness.

UNIT PLAN- CIELO AT BRIGADE VALENCIA

3BHK 2T-TYPE 3A

C 0003 to 1803, 2003 to 2203
C 0005 to 2205,



SUPER BUILT-UP AREA
137.34 Sq.m / 1478 Sq.ft

UNIT CARPET AREA
82.07 Sq.m / 883 Sq.ft

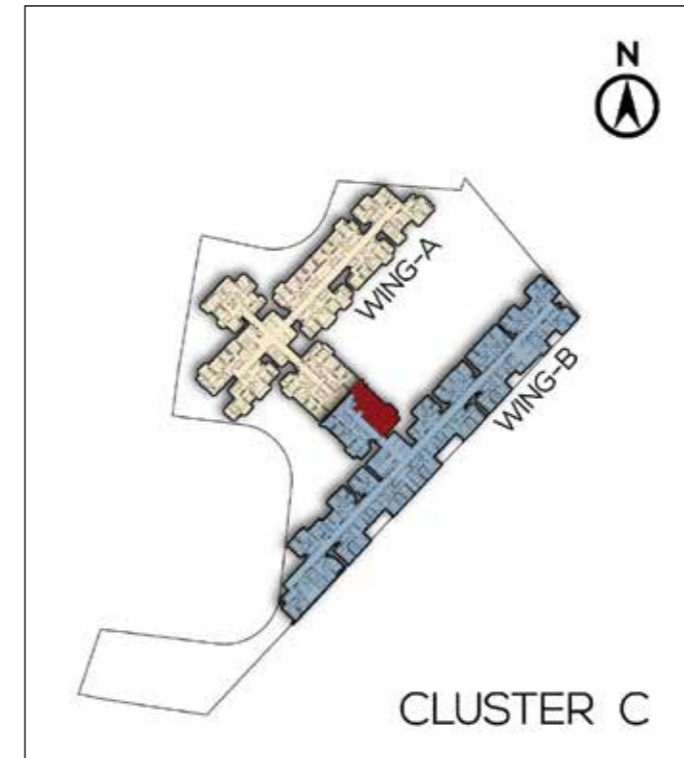
BALCONY AREA
6.12 Sq.m / 66 Sq.ft

The information depicted herein viz., master plans, floor plans, furniture layout, fittings, illustrations, specifications, designs, dimensions, rendered views, colours, amenities and facilities etc., are subject to change without notifications as may be required by the relevant authorities or the Developer's architect, and cannot form part of an offer or contract. Whilst every care is taken in providing this information, the Developer cannot be held liable for variations. All illustrations and pictures are artist's impressions only. The information is subject to variations, additions, deletions, substitutions and modifications as may be recommended by the company's architect and/or the relevant approving authorities. The Developer is wholly exempt from any liability on account of any claim in this regard. (1 square metre = 10.764 square feet). E & OE. All dimensions and calculations are done in metric system (M/Sq.m), and imperial system (Ft/Sq.ft) shown is for reference only. All dimensions indicated in the drawing are from unfinished surfaces, excluding plaster thickness and tile thickness.

UNIT PLAN- CIELO AT BRIGADE VALENCIA

3BHK 2T-TYPE 3B

C 0112 to 2212



SUPER BUILT-UP AREA
137.34 Sq.m / 1478 Sq.ft

UNIT CARPET AREA
82.07 Sq.m / 883 Sq.ft

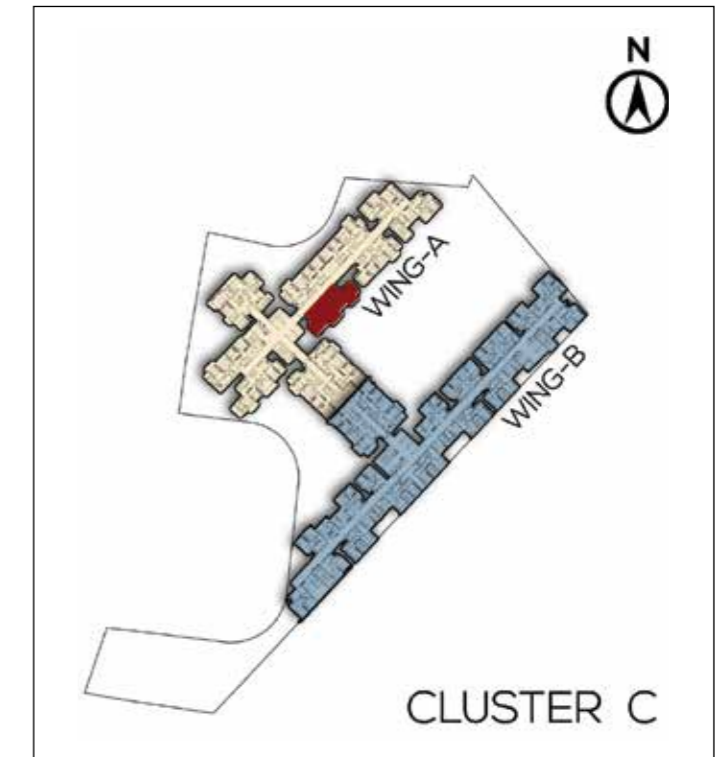
BALCONY AREA
6.12 Sq.m / 66 Sq.ft

The information depicted herein viz., master plans, floor plans, furniture layout, fittings, illustrations, specifications, designs, dimensions, rendered views, colours, amenities and facilities etc., are subject to change without notifications as may be required by the relevant authorities or the Developer's architect, and cannot form part of an offer or contract. Whilst every care is taken in providing this information, the Developer cannot be held liable for variations. All illustrations and pictures are artist's impressions only. The information is subject to variations, additions, deletions, substitutions and modifications as may be recommended by the company's architect and/or the relevant approving authorities. The Developer is wholly exempt from any liability on account of any claim in this regard. (1 square metre = 10.764 square feet). E & OE. All dimensions and calculations are done in metric system (M/Sq.m), and imperial system (Ft/Sq.ft) shown is for reference only. All dimensions indicated in the drawing are from unfinished surfaces, excluding plaster thickness and tile thickness.

UNIT PLAN- CIELO AT BRIGADE VALENCIA

3BHK 3T-TYPE 1A

C - 0010 to 2210



SUPER BUILT-UP AREA
155.86 Sq.m / 1678 Sq.ft

UNIT CARPET AREA
92.22 Sq.m / 993 Sq.ft

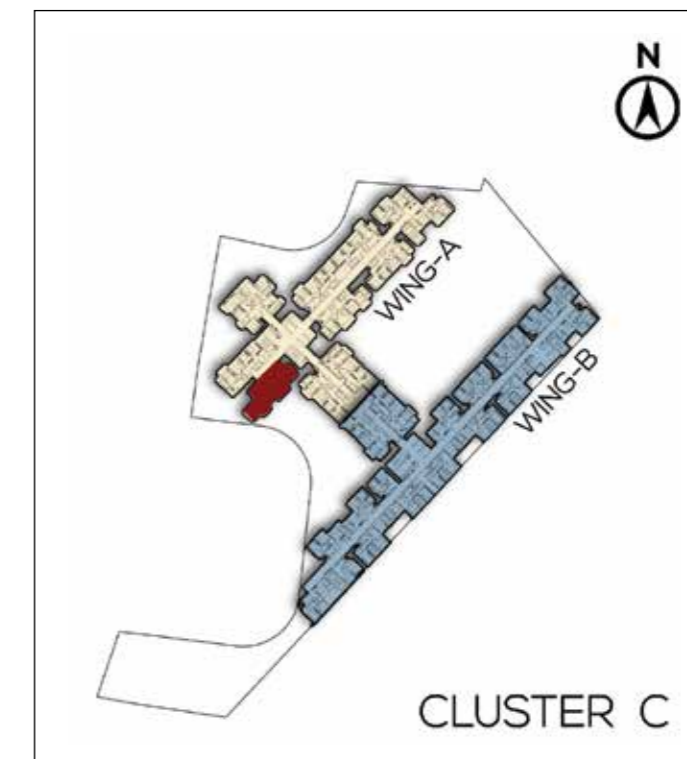
BALCONY AREA
7.79 Sq.m / 84 Sq.ft

The information depicted herein viz., master plans, floor plans, furniture layout, fittings, illustrations, specifications, designs, dimensions, rendered views, colours, amenities and facilities etc., are subject to change without notifications as may be required by the relevant authorities or the Developer's architect, and cannot form part of an offer or contract. Whilst every care is taken in providing this information, the Developer cannot be held liable for variations. All illustrations and pictures are artist's impressions only. The information is subject to variations, additions, deletions, substitutions and modifications as may be recommended by the company's architect and/or the relevant approving authorities. The Developer is wholly exempt from any liability on account of any claim in this regard. (1 square metre = 10.764 square feet). E & OE. All dimensions and calculations are done in metric system (M/Sq.m), and imperial system (Ft/Sq.ft) shown is for reference only. All dimensions indicated in the drawing are from unfinished surfaces, excluding plaster thickness and tile thickness.

UNIT PLAN- CIELO AT BRIGADE VALENCIA

3BHK 3T-TYPE 1B

C 0002 to 2202



SUPER BUILT-UP AREA

155.86 Sq.m / 1678 Sq.ft

UNIT CARPET AREA

92.22 Sq.m / 993 Sq.ft

BALCONY AREA

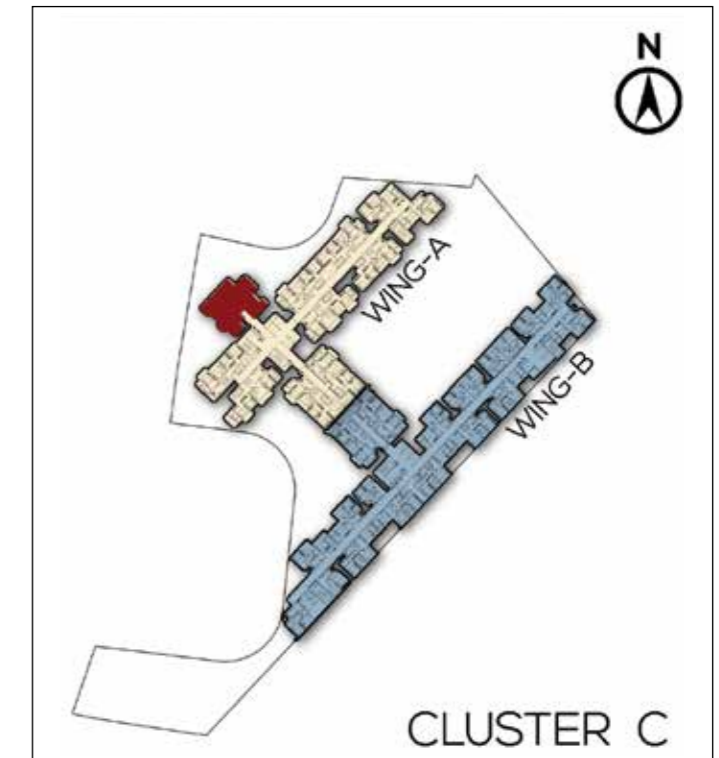
7.79 Sq.m / 84 Sq.ft

The information depicted herein viz., master plans, floor plans, furniture layout, fittings, illustrations, specifications, designs, dimensions, rendered views, colours, amenities and facilities etc., are subject to change without notifications as may be required by the relevant authorities or the Developer's architect, and cannot form part of an offer or contract. Whilst every care is taken in providing this information, the Developer cannot be held liable for variations. All illustrations and pictures are artist's impressions only. The information is subject to variations, additions, deletions, substitutions and modifications as may be recommended by the company's architect and/or the relevant approving authorities. The Developer is wholly exempt from any liability on account of any claim in this regard. (1 square metre = 10.764 square feet). E & OE. All dimensions and calculations are done in metric system (M/Sq.m), and imperial system (Ft/Sq.ft) shown is for reference only. All dimensions indicated in the drawing are from unfinished surfaces, excluding plaster thickness and tile thickness.

UNIT PLAN- CIELO AT BRIGADE VALENCIA

4BHK 3T + MAID ROOM

C 0004 to 2204



SUPER BUILT-UP AREA
211.47 Sq.m / 2276 Sq.ft

UNIT CARPET AREA
130.28 Sq.m / 1,402 Sq.ft

BALCONY AREA
6.94 Sq.m / 75 Sq.ft

The information depicted herein viz., master plans, floor plans, furniture layout, fittings, illustrations, specifications, designs, dimensions, rendered views, colours, amenities and facilities etc., are subject to change without notifications as may be required by the relevant authorities or the Developer's architect, and cannot form part of an offer or contract. Whilst every care is taken in providing this information, the Developer cannot be held liable for variations. All illustrations and pictures are artist's impressions only. The information is subject to variations, additions, deletions, substitutions and modifications as may be recommended by the company's architect and/or the relevant approving authorities. The Developer is wholly exempt from any liability on account of any claim in this regard. (1 square metre = 10.764 square feet). E & OE. All dimensions and calculations are done in metric system (M/Sq.m), and imperial system (Ft/Sq.ft) shown is for reference only. All dimensions indicated in the drawing are from unfinished surfaces, excluding plaster thickness and tile thickness.

SPECIFICATIONS

COMMON AREA FLOORING

Waiting Lounge/Reception/GF Lobby/

Lift Lobby: Granite/Vitrified tiles

Staircases: Cement Step tiles

Other Lift Lobby And Corridors (Upper):

Vitrified tiles/Industrial tiles

Terrace: Clay tiles

UNIT FLOORING

Living/Dining/Family/Foyer/Bedrooms/

Kitchen/Utility: Vitrified tiles

Balcony: Anti skid ceramic tiles

Toilets: Anti skid ceramic tiles

Maids room and toilet: Ceramic tiles

WALL DADO

Kitchen: Provision for modular kitchen (no granite slab/no dado will be provided)

Toilet: Ceramic tile

PAINTING & FINISHES

Exterior Finish: External grade emulsion. Emulsion/texture paint in certain areas.

Unit Internal Ceilings: Oil bound distemper/Acrylic Emulsion paint

Unit Walls: Acrylic Emulsion paint

KITCHEN

Counter: Provision for modular kitchen (No Counter will be provided)

Plumbing/Electrical:

Plumbing : Water Inlet/Drain Provision for Water Purifier/Sink and Washing Machine. Dishwasher provision for all units except 1 & 2 BHKs.

Electrical: Points provision for Hob, Chimney, Refrigerator, Mixer/grinder, Microwave, Water Purifier, Washing Machine. Dishwasher provision for all units except 1 & 2 BHKs.

DOORS

Main Door: Hard wood frame with Veneer flush shutter

Internal Doors: Hard wood frame with Laminate flush shutter

Balcony Door: UPVC/Aluminium with bug screen

WINDOWS

UPVC/Aluminium with bug screen

TOILETS

CP Fittings: Jaquar/Ess Ess or equivalent

Sanitary Fixtures: Wall mounted EWC (Jaquar/Parryware/Hindware/equivalent)

ELECTRICAL (APARTMENTS)

- 1 BHK: 3 kW
- 2 BHK & 2 BHK + Study: 4 kW
- 3 BHK 2T: 5 kW
- 3 BHK 3T: 6 kW
- 4 BHK: 8 kW

Switches: Modular switches - Anchor Roma or equivalent make

DG BACKUP*

100% DG back up for Common Areas.
50% back up for units.

VERTICAL TRANSPORTATION

Lifts provided as per design

SECURITY SYSTEM & AUTOMATION

CCTV Provision for Security Room at Cluster Entrance and Entry/Exit points of Clusters at Stilt Lobby

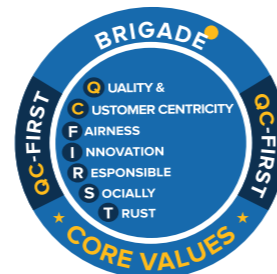
*At additional cost



BRIGADE

Building Positive Experiences

Our core values



Founders



To **UPGRADE TO BRIGADE**, reach us on **1800 102 9977** • **BrigadeValencia.com**

Site Marketing Office:
Brigade Valencia
NH 44, Kithaganahalli & Banahalli Village,
Bommasandra Industrial Area,
Bengaluru – 562106.

Registered & Corporate Office:
29th & 30th Floor,
WTC Bangalore@Brigade Gateway Campus,
Dr. Rajkumar Road, Malleswaram-Rajajinagar,
Bengaluru 560055

Dubai
Brigade Enterprises Ltd.,
902. Nassima Tower, Sheikh Zayed Rd,
Ph: +971 4355 5504
dubaisales@brigadegroup.com

Offices also at: CHENNAI • HYDERABAD • MYSURU