



**ADARSH**  
**CREST**

---

Hebbal, Kempapura



Artistic Impression

Live the balance between  
**MAGNITUDE**  
&  
**ELEGANCE**

2 & 3 BHK Luxury Apartments at Kempapura



Artistic Impression

# NORTH BENGALURU'S FINEST OFFERING

Adarsh Crest enjoys the privacy of a secluded and serene neighbourhood, with the daily urban life kept closely at bay. The high-rise towers of Adarsh Crest are a rare combination of avant-garde design, natural surroundings and practical amenities. It promises a level of unparalleled comfort, ensuring once you move in, you'll never want to leave.

## Highlights



**2 & 3 BHK Luxury Apartments 1282 sqft - 2144 sqft**



**Vaastu Compliant Homes**

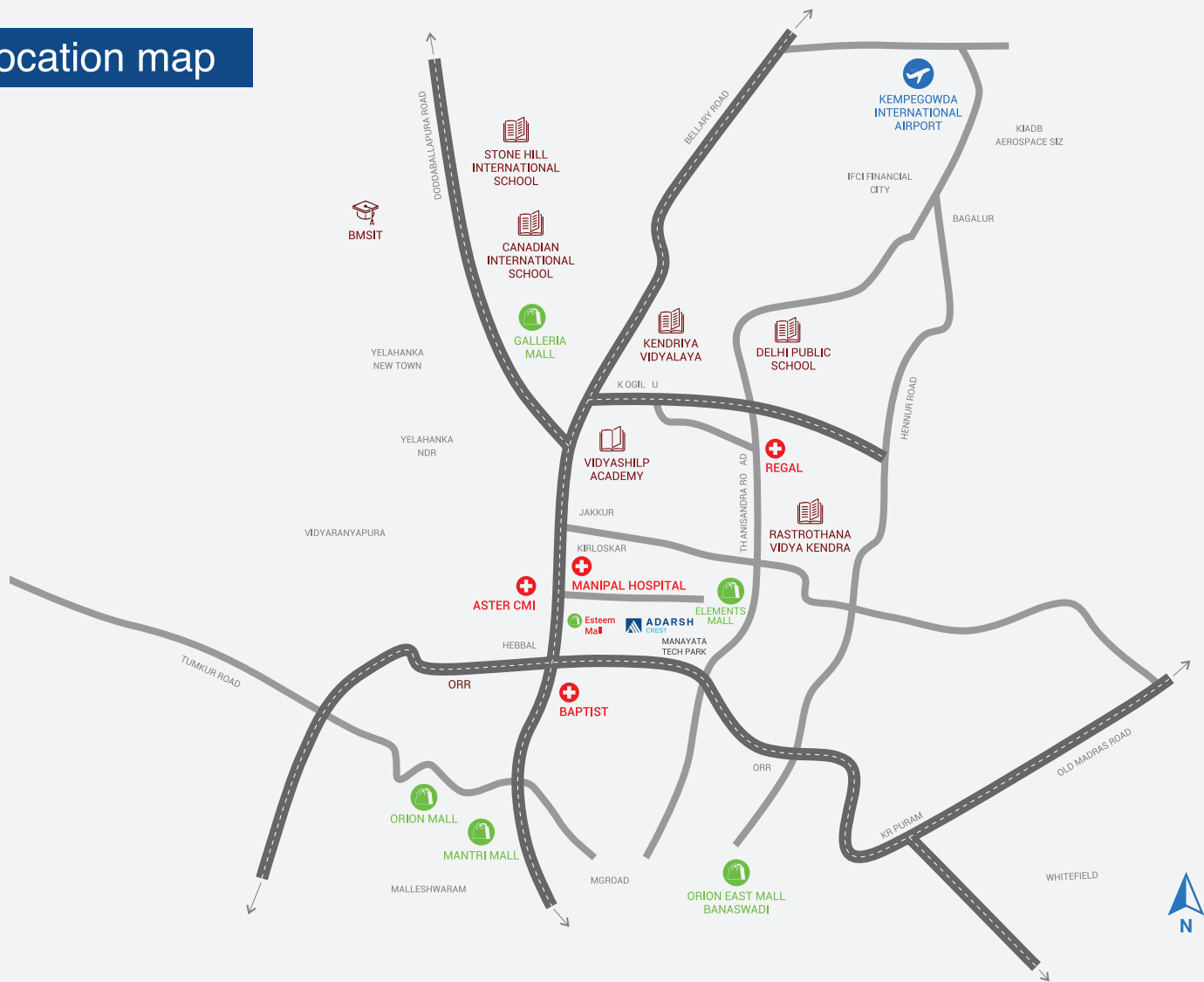


**Pool and Garden Facing Homes**



**75% Open Space**

## Location map



## CONVENIENCE AT YOUR DOORSTEP

Leave behind the city's noise and embrace effortless connectivity. Live only a short drive away from North Bangalore's most popular tech parks, best schools, and most well-reputed medical facilities.

Choose the possibilities of life with expansive views of the Hebbal Lake, Nagavara Lake, Lumbini Gardens, and the skyline of greater Bangalore. Experience urban convenience at its very best.



### HOSPITALS

Aster CMI  
 Manipal Hospital  
 Baptist Hospital  
 Prolife Hospitals



### OFFICE SPACES

Karle SEZ  
 Manyata Tech Park  
 Brigade Magnum  
 Kirloskar Business Park



### EDUCATION INSTITUTIONS

Presidency College  
 Sindhi College  
 Kensri School  
 Godwin Public School  
 NITTE International School  
 Vidyashilp School



### LEISURE

Esteem Mall  
 Elements Mall  
 Galleria Mall  
 Lumbini Garden



### HOTELS AND HOSPITALITY

Courtyard by Marriott  
 Windsor Manor  
 Shangri-La  
 Lalit Ashok  
 Le Meridien  
 Taj West End, Sheraton



Artistic Impression

## THE PERFECT LIFE AWAITS YOU

### 1. Entrance Plaza

- 1.1 Entrance gateway
- 1.2 Sculpture court
- 1.3 Entrance feature wall
- 1.4 Palm court

### 2. Central Park

- 2.1 Swimming pool
- 2.2 Open-air theatre
- 2.3 Clubhouse - outdoor cafeteria with Wi-Fi
- 2.4 Outdoor gym
- 2.5 Party lawn / yoga lawn
- 2.6 Kid's play area, sand pit
- 2.7 Floral garden
- 2.8 Multipurpose play court

### 3. Rear Park

- 3.1 Cricket pitch
- 3.2 Cycling / jogging track
- 3.3 Tot lot
- 3.4 Pet park
- 3.5 Swing park
- 3.6 Maze garden

Disclaimer: Contents of this advertisement are only for information, interpretation not permitted and is not an offer for contract. Contact our sales team for accurate information and we appreciate independent inquiry prior to definiteness. The villa/apartment elevation, façade treatment, doors & window frames, colour, landscaping and car shown are indicative and for representation purposes only.

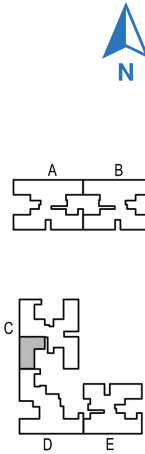


## MASTER PLAN

### LEGEND

- |                       |                        |                          |
|-----------------------|------------------------|--------------------------|
| 1. ENTRY / EXIT       | 11. ELDER'S POOL       | 21. CRICKET PRACTICE NET |
| 2. SECURITY CABIN     | 12. KID'S POOL         | 22. SWING PARK           |
| 3. FEATURE WALL       | 13. OPEN-AIR THEATRE   | 23. REFLEXOLOGY PARK     |
| 4. ENTRANCE PLAZA     | 14. LUDO               | 24. ZEN GARDEN           |
| 5. 2-WHEELER PARKING  | 15. GIANT CHESS        | 25. MAZE GARDEN          |
| 6. VISITOR PARKING    | 16. PET PARK           | 26. SERVICES             |
| 7. CYCLE TRACK        | 17. MULTIPURPOSE COURT | 27. RAMPS                |
| 8. SCULPTURE COURT    | 18. FLORAL GARDEN      | 28. CLUBHOUSE ENTRY      |
| 9. OUTDOOR GYM        | 19. SAND PIT           | 29. TOWER DROP-OFF       |
| 10. YOGA & PARTY LAWN | 20. KID'S PLAY AREA    |                          |

# 3 BHK + SERVANT UNIT



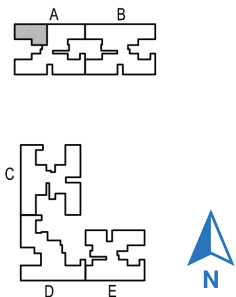
## SUPER BUILT-UP AREA (BLOCK - C)

sqm.	sqft.
190.87	2054
CARPET AREA	
sqm.	sqft.
126.43	1361

## LEGEND

NO.	ROOM	SIZE
1	FOYER	- 4'11" x 9'10"
2	LIVING	- 19'0" x 12'0"
3	BALCONY	- 4'11" x 12'0"
4	DINING	- 10'6" x 11'2"
5	KITCHEN	- 11'0" x 9'0"
6	UTILITY	- 5'1" x 9'8"
7	SER. ROOM	- 5'1" x 9'10"
8	SER. TOILET	- 5'9" x 4'1"
9	BEDROOM 2	- 13'1" x 11'0"
10	A. TOILET	- 8'2" x 5'7"
11	BEDROOM 3	- 13'1" x 10'6"
12	C. TOILET	- 5'7" x 8'0"
13	M. BEDROOM	- 19'0" x 12'0"
14	A. TOILET	- 5'7" x 8'6"
15	BALCONY	- 4'11" x 12'0"

# 3 BHK UNIT



## SUPER BUILT-UP AREA (BLOCK - A)

sqm.	sqft.
181.18	1950
CARPET AREA	
sqm.	sqft.
120.61	1298

## LEGEND

NO.	ROOM	SIZE
1	FOYER	- 7'2" x 9'8"
2	LIVING	- 12'0" x 19'0"
3	BALCONY	- 12'0" x 4'11"
4	DINING	- 11'2" x 10'6"
5	KITCHEN	- 11'0" x 9'0"
6	UTILITY	- 5'7" x 9'0"
7	BEDROOM 3	- 10'6" x 13'1"
8	C. TOILET	- 8'0" x 5'7"
9	BEDROOM 2	- 11'0" x 13'1"
10	A. TOILET	- 5'7" x 8'2"
11	M. BEDROOM	- 12'0" x 19'0"
12	A. TOILET	- 8'6" x 5'7"
13	BALCONY	- 12'8" x 4'11"



---

Sales Lounge: Adarsh Crest  
Kempapura Village, Yelahanka Hobli, North of Bangalore  
+91 95131 66840 | [sales@adarshdevelopers.com](mailto:sales@adarshdevelopers.com)

[www.adarshdevelopers.com](http://www.adarshdevelopers.com)   

**A member of CREDAI** BENGALURU

---

RERA No.: PRM/KA/RERA/1251/446/PR/211022/004369  
For more details: [www.rera.karnataka.gov.in](http://www.rera.karnataka.gov.in)